

This document prepared by : Semke & Associates - 712-792-2276  
 Micheal G. Semke, L.S. #10318 - 716 N. Crawford St. - Carroll, Iowa

UNITED STATES PUBLIC LAND SURVEY CORNER CERTIFICATE  
 OF

Land Survey Monuments situated in Section 6, Township 85 North, Range 39  
 West, of the Fifth Principal Meridian, Crawford County, Iowa.  
 Previously recorded in Book , Page in County Recorder's Office.

(Show reason for preparing this certificate, the evidence and detailed procedures used in establishing the corner positions and monumentation found or placed.)

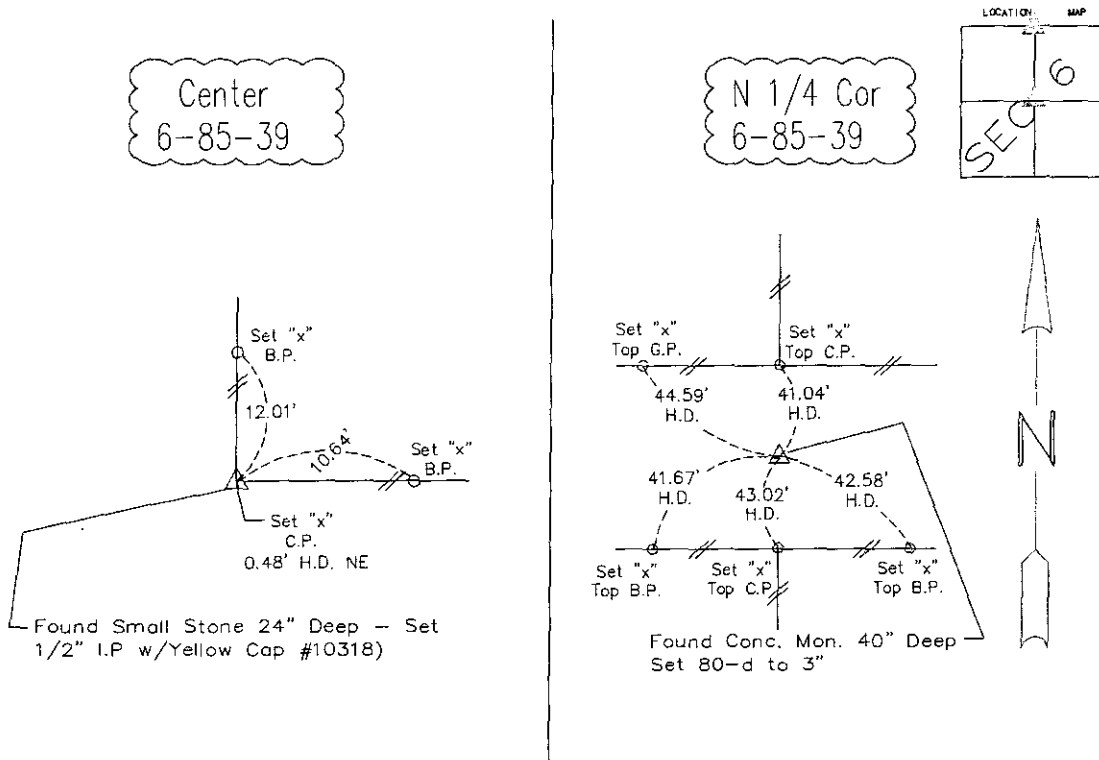
Center of Section Found Small Stone 24" Deep - Set  
 1/2" I.P. w/Yellow Cap #10318)

N 1/4 Corner Dug 5'x8'x4' Hole - Found Conc.  
 Mon. 40" Deep - Raised to 3" w/  
 80-d Spike w/ Washer

Note: All pins set are 1/2" x 24" Rerod w/Yellow Cap #10318 unless noted otherwise.

PLAN - VIEW

(Show a minimum of three reference ties to durable physical objects, relevant monuments and physical conditions that will enable recovery of the corner.)

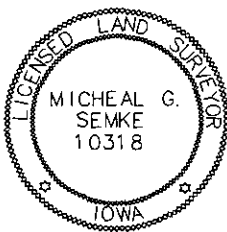


Note: all ties slope chained unless noted otherwise.

I HEREBY CERTIFY THAT THIS LAND SURVEYING DOCUMENT WAS PREPARED AND RELATED SURVEY WORK WAS PERFORMED BY ME OR UNDER MY DIRECT PERSONAL SUPERVISION AND THAT I AM A DULY LICENSED LAND SURVEYOR UNDER THE LAWS OF THE STATE OF IOWA.

*Micheal G. Semke* 1/13/08  
 Signature Date  
 Micheal G. Semke, L.S. No. 10318  
 Printed of Typed Name

Pages or sheets covered by this seal THIS PAGE My license renewal date is 12/31/09.



List Corners to be Indexed			
Corners	Section	Twp	Range
N 1/4 Cor	6	85	39
Center of Section	6	85	39