

FILED DENISON, IOWA
CRAWFORD COUNTY

FILED
PROVED *WJ*
DMME

2003 NOV 17 AM 11:55

REC. NO. *2003-4352*
DENISE MEEVES, RECORDER
Denise Meeves
FEE *11.00*

PREPARED BY ROBERT L. HOLZE MID-WEST LAND SURVEYORS, INC., P.O. BOX 1352, MASON CITY, IOWA 50402-1352. (641)-423-1451

UNITED STATES PUBLIC LAND SURVEY CORNER CERTIFICATE
OF

Land Survey Monuments situated in Section 9, Township 85N, Range 39W, of the Fifth Principal Meridian, CRAWFORD County, Iowa
Previously recorded in _____ In County Recorder's Office.

(book, page, document, number, etc.)

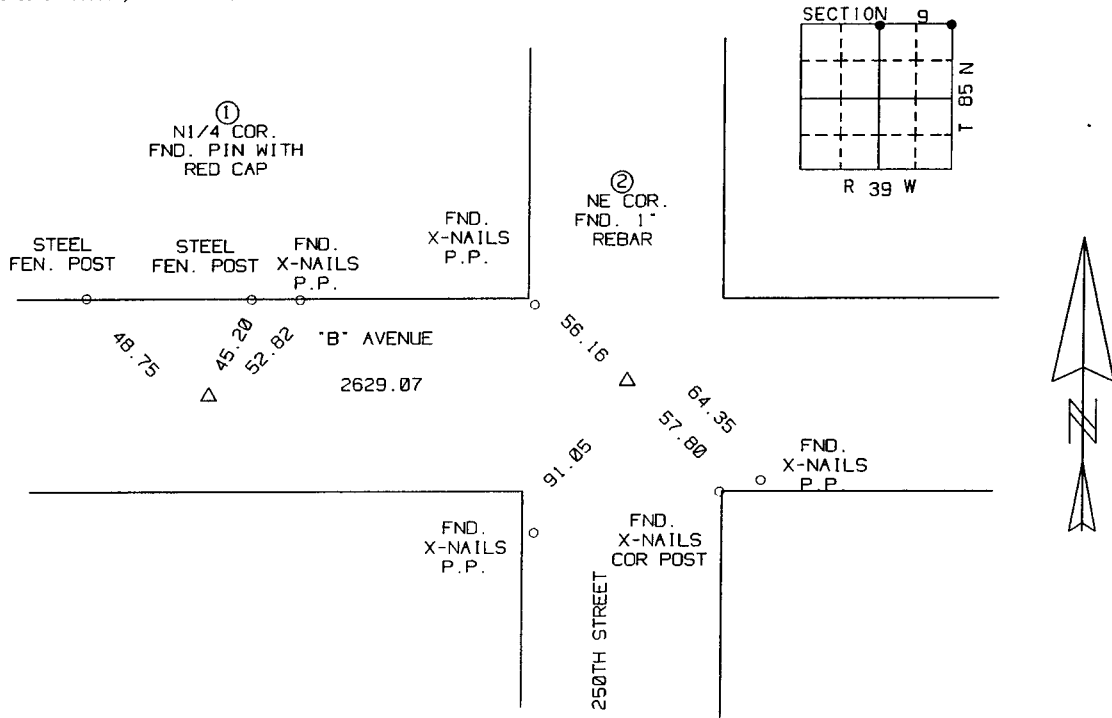
(Show reason for preparing this certificate, the evidence and detailed procedures used in establishing the corner positions and monumentation found or placed.)

Monument Description and Remarks:

- ① N1/4 CORNER FOUND PIN WITH RED CAP
- ② NORTHEAST CORNER FOUND 1" REBAR

PLAN-VIEW

(Show a minimum of three reference ties to durable physical objects, relevant monuments and physical conditions that will enable recovery of corner.)



I hereby certify that the survey work was completed and this certificate was prepared by me or under my direct personal supervision and that I am a duly Licensed Land Surveyor under the laws of the State of Iowa.

Signature: *Robert L. Holze*
Robert L. Holze 8650

Date: 10/16/2003 Reg. 8656

My registration renewal date is December 31, 2009

List of Corners to be Indexed

Corners	Section	Twp.	Range
① N1/4 COR.	9	85N	39W
② NE COR.	9	85N	39W