

INDEXED DM  
FILED 105  
RECORDED  
SEARCHED

This document prepared by: Semke & Associates - 712-792-2276  
Michael G. Semke, L.S. #10318 - 716 N. Crawford St. - Carroll, Iowa

UNITED STATES PUBLIC LAND SURVEY CORNER CERTIFICATE OF

Land Survey Monuments situated in Section 11, Township 83 North, Range 40  
West of the Fifth Principal Meridian, Crawford County, Iowa.  
Previously recorded in Book , Page in County Recorder's Office.

(Show reason for preparing this certificate, the evidence and detailed procedures used in establishing the corner positions and monumentation found or placed.)

NW Corner Set Iron Pin @ 3-way Property  
SE 1/4 SW 1/4 Divide - Theoretical Corner No Good

SW Corner Set Iron Pin on Line w/known  
SE 1/4 SW 1/4 Corners E. & W. - Set on 1/4 1/4  
Line North

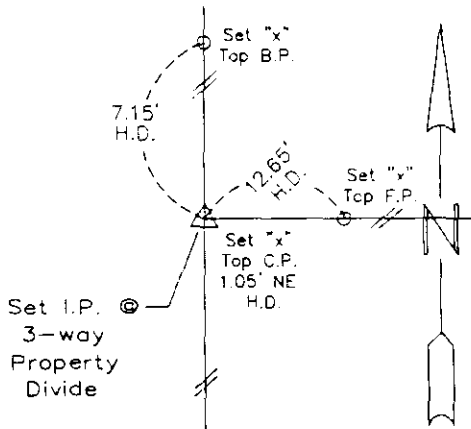
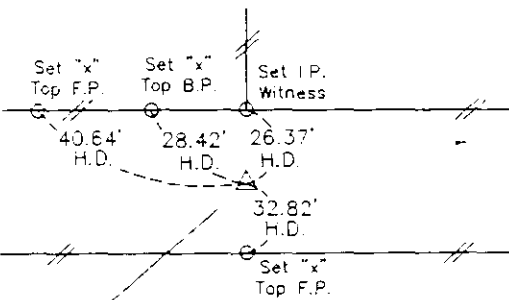
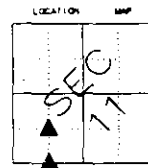
Note: All pins set are 1/2" x 24" Rerod w/Yellow Cap #10318 unless noted otherwise.

PLAN - VIEW

(Show a minimum of three reference ties to durable physical objects, relevant monuments and physical conditions that will enable recovery of the corner.)

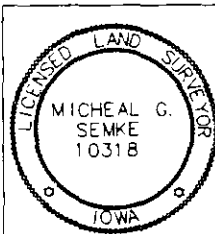
SW Corner  
SE 1/4 SW 1/4  
11-83-40

NW Corner  
SE 1/4 SW 1/4  
11-83-40



Set Iron Pin on Line w/known  
Corners E. & W. - Set on  
1/4 1/4 Line North

Note: All ties slope chained unless noted otherwise - H.D. = Horz. Dist.



I HEREBY CERTIFY THAT THIS LAND SURVEYING DOCUMENT WAS PREPARED AND RELATED SURVEY WORK WAS PERFORMED BY ME OR UNDER MY DIRECT PERSONAL SUPERVISION AND THAT I AM A DULY LICENSED LAND SURVEYOR UNDER THE LAWS OF THE STATE OF IOWA.

*Michael G. Semke* 4/18/11  
Signature Date

Printed of Typed Name  
Michael G Semke, L.S. No. 10318

Pages or sheets covered by this seal THIS PAGE My license renewal date is 12/31/11.

List Corners to be Indexed

Corners	Section	Twp	Range
SW Cor. SE 1/4 SW 1/4	11	83	40
NW Cor. SE 1/4 SW 1/4	11	83	40