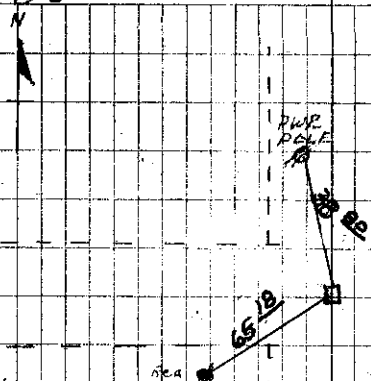


1/6 9-5-39-Dug-32"X8"X12' hole
127 in center of intersection
No find.

Established Split fences and Took REA
Ties Iron Rod To Surface 5-27-58

39.9	SE of Cor Post	(Slope Chain)
43.9	SW of Tel Pole	(Slope Chain)
46.0	NW of Cor Post	(Slope Chain)
49.6	NE of REA Pole	(Slope Chain)
60.3	SW of Brace Post	
59.2	NW " " "	

12-8-5



5-27-58

Richards
Wight
Tamm

SET 5/8" IRON PIN
WKAP # 8893
6" DEEP OVER 3PK
RETIED FROM SEC.
CORNER
SUNDQUIST
6-24-75

OK. 1965

Richards

8-2-01

SET 1"X1/4" REBAR 8"
DEEP SET FROM TIES
Co. GRADED ROAD
BERNDT