

INDEXED DM/DM
 FOLLOW UP DM
 PROOFED DM
 SCANNED DM

Instrument #: 2021-1223
 06/04/2021 09:29:34 AM Total Pages: 1
 PLC PLAT COR CERT
 Recording Fee: \$0.00 Transfer Tax: \$0
 Denise Meeves, Recorder, Crawford County Iowa



PREPARED BY: PAUL ASSMAN-CRAWFORD COUNTY ENGINEER'S OFFICE-COURTHOUSE-DENISON, IA.-712-263-2449

UNITED STATES PUBLIC LAND SURVEY CORNER CERTIFICATE OF

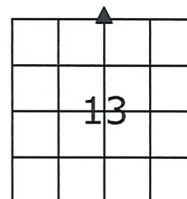
LAND SURVEY MONUMENT SITUATED IN PARADISE TOWNSHIP, THE NORTH 1/4 CORNER OF SECTION 13, T-83N,
R-40W OF THE FIFTH P.M. CRAWFORD COUNTY, IOWA.

PREVIOUSLY RECORDED IN THE PARADISE TWP FIELD BOOK PAGE 27, COUNTY ENGINEER'S OFFICE

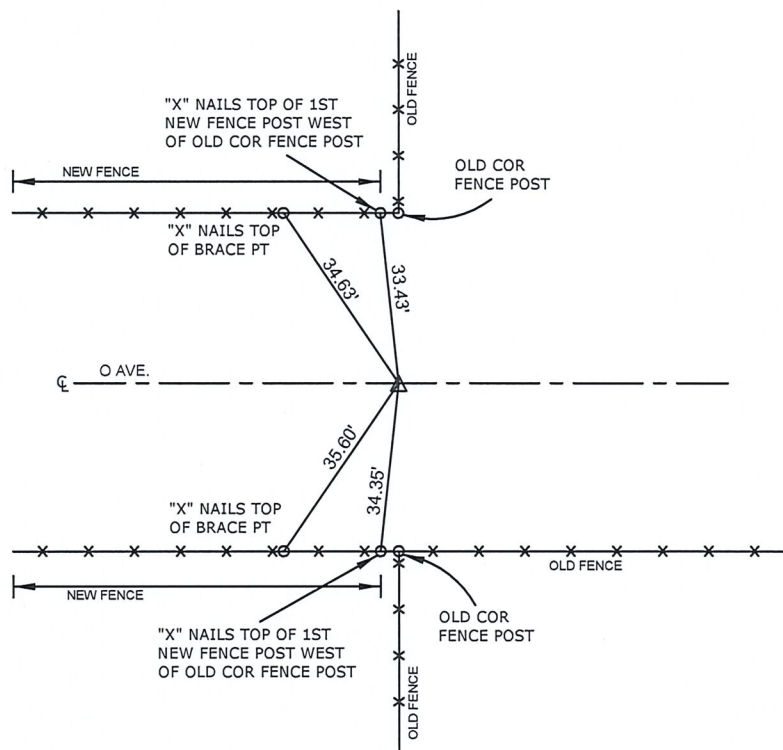
MONUMENT DESCRIPTION AND REMARKS

NORTH 1/4 CORNER SEC. 13-83-40

FOUND STEEL SPIKE 0.2' DEEP. CONTINUED DIGGING AND FOUND CONCRETE MONUMENT AT 0.8' DEEP. COUNTY REGRADED WEST 1/2 MILE OF GRAVEL ROAD ALONG THE NORTH LINE OF THE SECTION, ENDING WORK AT THE 1/4 COR. SEC.13. DUG UP AND VERIFIED THAT THE CONCRETE CORNER HAD NOT BEEN DISTURBED AT 0.8' DEEP AND RETIED CORNER.



NORTH 1/4 CORNER SEC. 13-83-40



ALL DISTANCES ARE SLOPE CHAINED

CERTIFICATION:

I HEREBY CERTIFY THAT THIS LAND SURVEYING DOCUMENT WAS PREPARED AND THE RELATED SURVEY WORK WAS PERFORMED BY ME OR UNDER MY DIRECT PERSONAL SUPERVISION AND THAT I AM A DULY LICENSED LAND SURVEYOR UNDER THE LAWS OF THE STATE OF IOWA.


 Signature

5/27/21
 Date of Survey

PAUL J. ASSMAN
 Typed Name

11982
 L.S. No.

12-31-22
 License Renewal Date

Pages covered by this seal 1

