

INDEXED DM
 FOLLOW UP _____
 PROOFED _____
 SCANNED _____

Instrument #: 2016-1887
 09/08/2016 08:51:43 AM Total Pages: 1
 PLC PLAT CORNER CER
 Recording Fee: \$0.00 Transfer Tax: \$0
 Denise Reeves, Recorder, Crawford County Iowa



PREPARED BY: PAUL ASSMAN-CRAWFORD COUNTY ENGINEER'S OFFICE-COURTHOUSE-DENISON, IA.-712-263-2449

UNITED STATES PUBLIC LAND SURVEY CORNER CERTIFICATE OF

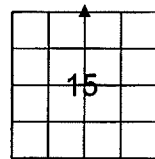
LAND SURVEY MONUMENT SITUATED IN PARADISE TOWNSHIP, THE NORTH 1/4 CORNER OF SECTION 15, T-83N,
R-40W OF THE FIFTH P.M. CRAWFORD COUNTY, IOWA.

PREVIOUSLY RECORDED AS NO. 2007-1060

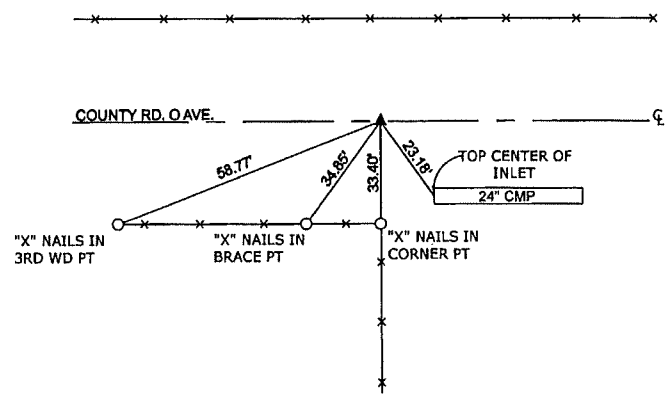
MONUMENT DESCRIPTION AND REMARKS

NORTH 1/4 CORNER SEC. 15-83-40

FOUND CONCRETE MONUMENT USING PREVIOUS TIES.
 COMPLETED COUNTY GRADING, PROJECT NO. LG30-15N.
 SET 5/8" X 18" REBAR WITH RED CAP #IA 11982 1.0' DEEP
 AND RETIED CORNER.



NORTH 1/4 CORNER SEC. 15-83-40



ALL DISTANCES ARE SLOPE CHAINED

CERTIFICATION:

I HEREBY CERTIFY THAT THIS LAND SURVEYING DOCUMENT WAS PREPARED AND THE RELATED SURVEY WORK WAS PERFORMED BY ME OR UNDER MY DIRECT PERSONAL SUPERVISION AND THAT I AM A DULY LICENSED LAND SURVEYOR UNDER THE LAWS OF THE STATE OF IOWA.

Signature: *Paul J. Assman* Date of Survey: 9/7/16
 PAUL J. ASSMAN 11982 License Renewal Date: 12-31-16
 Typed Name L.S. No.

