

INDEXED *SM*
FOLLOW UP *SM*
PROOFED *SM*
SCANNED *SM*

This document prepared by : Semke & Associates - 712-792-2276
Micheal G. Semke, L.S. #10318 - 716 N. Crawford St. - Carroll, Iowa

UNITED STATES PUBLIC LAND SURVEY CORNER CERTIFICATE of
Land Survey Monuments situated in Section 11, Township 83 North, Range 40
West of the Fifth Principal Meridian, Crawford County, Iowa.
Previously recorded in Book , Page in County Recorder's Office.

(Show reason for preparing this certificate, the evidence and detailed procedures used in establishing the corner positions and monumentation found or placed.)

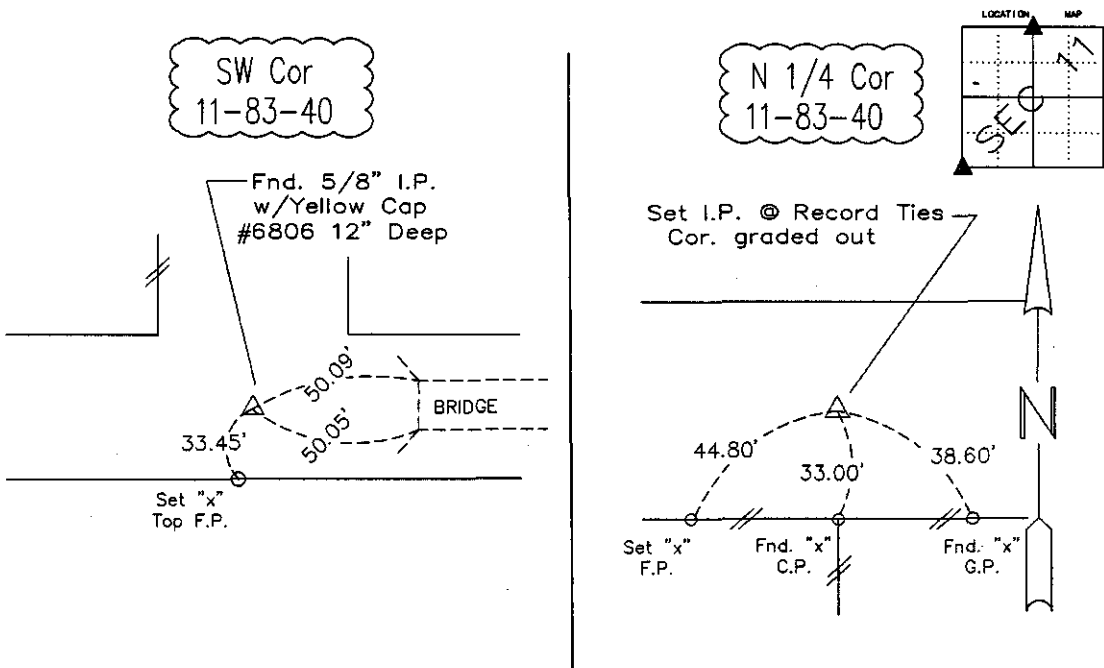
N 1/4 Corner Set Iron Pin @ Record Ties - Corner
appears to have been graded out

SW Corner Found 5/8" I.P. w/Yellow Cap
#6806 12" Deep

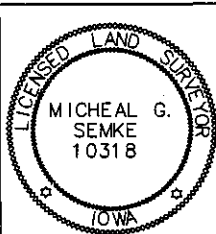
Note: All pins set are 1/2" x 24" 'Rerod w/Yellow Cap #10318 unless noted otherwise.

PLAN - VIEW

(Show a minimum of three reference ties to durable physical objects, relevant monuments and physical conditions that will enable recovery of the corner.)



Note: All ties slope chained unless noted otherwise - H.D. = Horz. Dist.



I HEREBY CERTIFY THAT THIS LAND SURVEYING DOCUMENT WAS PREPARED AND RELATED SURVEY WORK WAS PERFORMED BY ME OR UNDER MY DIRECT PERSONAL SUPERVISION AND THAT I AM A DULY LICENSED LAND SURVEYOR UNDER THE LAWS OF THE STATE OF IOWA.

Micheal G. Semke 4/18/11
Signature Date
Micheal G. Semke, L.S. No. 10318

Printed of Typed Name

Pages or sheets covered by this seal THIS PAGE My license renewal date is 12/31/11.

List Corners to be Indexed

Corners	Section	Twp	Range
N 1/4 Cor	11	83	40
S 1/4 Cor	2	83	40
SW Cor	11	83	40
NW Cor	14	83	40
NE Cor	15	83	40
SE Cor	10	83	40