

INDEXED _____
 RECORDED UP _____
 FILED _____
 SCHEDULED _____



Crawford County Recorder Denise Meeves
 Fee Book 2007-1058 REC014211
 04/20/2007 @1020AM # Pages 1
 PLC PLAT CORNER CER
 Total Fees: \$7.00

PREPARED BY: PAUL J. ASSMAN - 2130 DELOIT BLVD., DENISON, IOWA 51442 - 712-263-8747

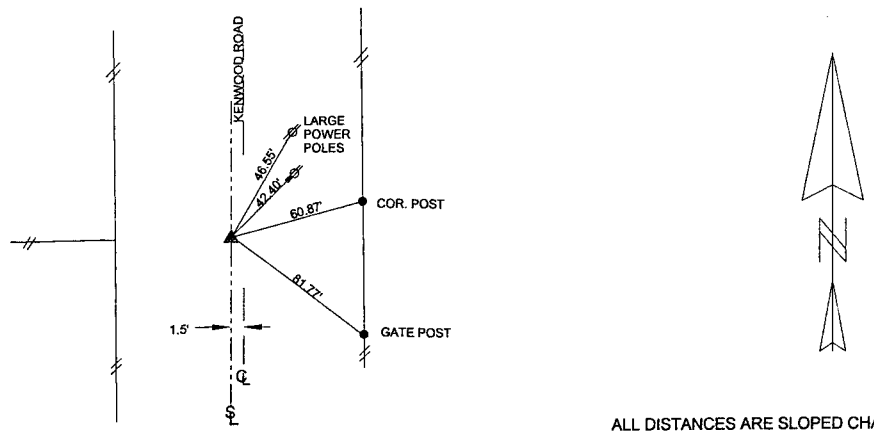
**UNITED STATES PUBLIC LAND SURVEY CORNER CERTIFICATE
 OF
 LAND SURVEY MONUMENT SITUATED IN PARADISE TOWNSHIP, THE WEST 1/4
 CORNER OF SECTION 15, T-83N, R-40W OF THE FIFTH P.M. CRAWFORD COUNTY, IOWA.
 PREVIOUSLY RECORDED AS NO.**

MONUMENT DESCRIPTION AND REMARKS

WEST 1/4 CORNER SEC. 15-83-40

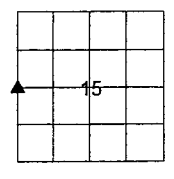
SET BOLT TO SURFACE IN HMA PAVEMENT ON LINE BETWEEN NW1/4 AND SW1/4
 AND AN EVEN SPLIT OF THE DISTANCE BETWEEN NW1/4 AND SW1/4.

WEST 1/4 CORNER SEC. 15-83-40



ALL DISTANCES ARE SLOPED CHAINED
 ALL TIES ARE "X" NAILS UNLESS NOTED.

CORNER: WEST 1/4
 SECTION: 15
 TOWNSHIP: 83N
 RANGE: 40W



<p>CERTIFICATION: I HEREBY CERTIFY THAT THIS LAND SURVEYING DOCUMENT WAS PREPARED AND THE RELATED SURVEY WORK WAS PERFORMED BY ME OR UNDER MY DIRECT PERSONAL SUPERVISION AND THAT I AM A DULY LICENSED LAND SURVEYOR UNDER THE LAWS OF THE STATE OF IOWA.</p>			
<p><i>Paul J. Assman</i> Signature</p>	<p>4/1/07 Date of Survey</p>		
<p>PAUL J. ASSMAN Typed Name</p>	<p>11982 L.S. No.</p>	<p>Dec. 31, 2008 License Renewal Date</p>	
<p>Pages covered by this seal <u>1</u></p>			
<p>_____</p>			