

INDEXED WFB
 FOLLOW UP _____
 PROOFED WFB
 SCANNED WFB

REC009586



Crawford County Recorder Denise Meeves
 FEE BOOK 2006-0561 3/06/2006 @ 09:51AM
 PLC PLAT CORNER CERBook: Page: #: 1
 Total Fees: \$.00

PREPARED BY: MICKAEL BERNDT
 CRAWFORD COUNTY ENGINEERS OFFICE - COURTHOUSE - DENISON, IA. - 712-263-2449

**UNITED STATES PUBLIC LAND SURVEY CORNER CERTIFICATE
 OF**

LAND SURVEY MONUMENT SITUATED IN PARADISE TOWNSHIP, THE NORTH 1/4
 CORNER OF SECTION 16, T-83N, R-40W OF THE 5TH P.M. CRAWFORD COUNTY, IOWA.

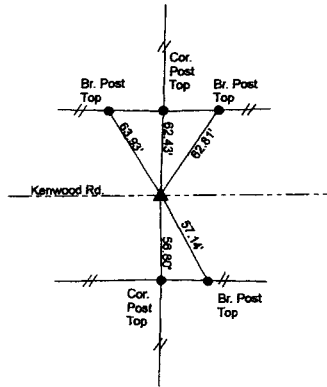
PREVIOUSLY RECORDED AS NO.

MONUMENT DESCRIPTION AND REMARKS

NORTH 1/4 CORNER SEC.16-83-40

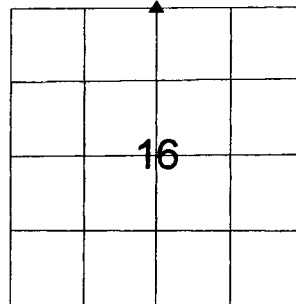
IN 2005 AN HMA OVERLAY WAS PLACED ON M14. THE CORNERS WERE TIED OFF AND RESET AFTER THE
 OVERLAY PROJECT WAS COMPLETED. A 3" X 3/8" ROUND HEADED BOLT WAS DRIVEN IN THE ASPHALT
 AND RECESSED 1/4" BELOW THE SURFACE. SET 10-11-05

NORTH 1/4 CORNER SEC. 16-83-40



ALL DISTANCES ARE SLOPED CHAINED

CORNER: NORTH 1/4
 SECTION: 16
 TOWNSHIP: 83N
 RANGE: 40W



CERTIFICATION:

I HEREBY CERTIFY THAT THIS LAND SURVEYING DOCUMENT WAS PREPARED AND THE RELATED
 SURVEY WORK WAS PERFORMED BY ME OR UNDER MY DIRECT PERSONAL SUPERVISION AND
 THAT I AM A DULY LICENSED LAND SURVEYOR UNDER THE LAWS OF THE STATE OF IOWA.

Mickael F. Berndt 3-6-06
 Signature Date of Survey
 Mickael F. Berndt 14808 Dec. 31, 2006
 Typed Name L.S. No. License Renewal Date

Pages covered by this seal: 1

