

SEARCHED _____
 INDEXED _____
 SERIALIZED _____
 FILED _____

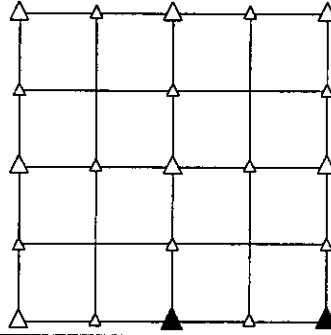
PREPARED BY - JOSEPH P. RUESCHENBERG - SUNDBLIND ENGINEERING - 120 S. MAIN, DENISON, IOWA 51442 - PHONE (712) 263-8118

UNITED STATES PUBLIC LAND SURVEY CORNER CERTIFICATE
OF

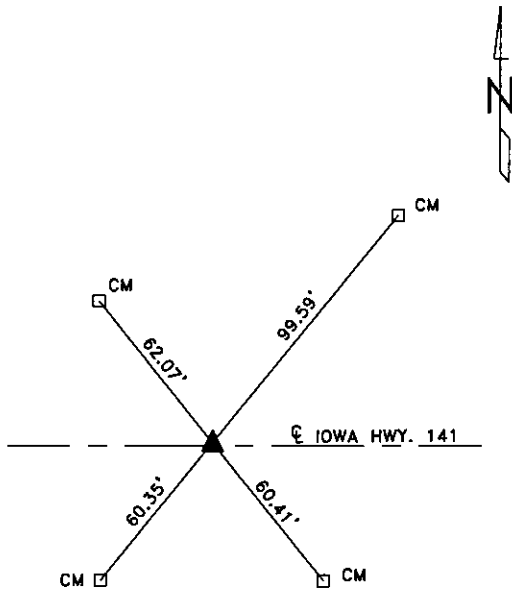
LAND SURVEY MONUMENT SITUATED IN SECTION 36, T 84 N, R 40 W OF
 THE 5TH P.M., CRAWFORD COUNTY, IOWA.
 PREVIOUSLY RECORDED IN BOOK _____, PAGE _____, OTHER _____

MONUMENT DESCRIPTION AND REMARKS

S1/4 CORNER - FOUND BROKEN PK NAIL IN CENTERLINE OF IOWA HWY. 141.
 SE CORNER - SET PK NAIL IN CENTERLINE OF IOWA HWY. 141 FLUSH, SET FROM IDOT PLANS.

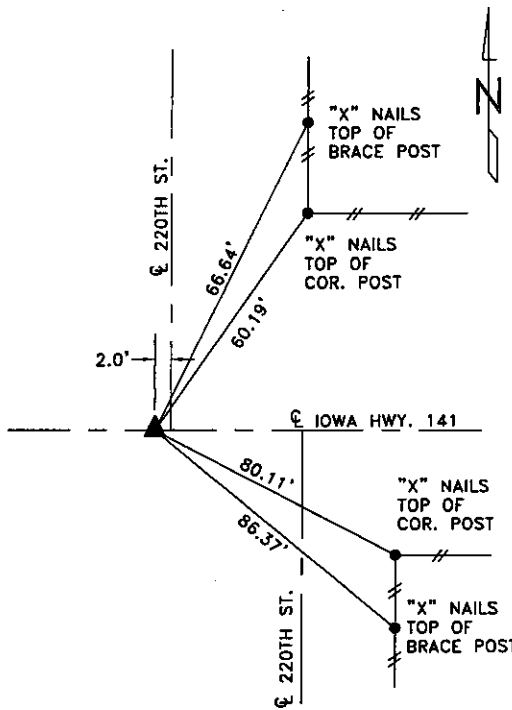


PLAN VIEW SHOWING RELATIVE LOCATION OF MONUMENT AND REFERENCE POINTS.



DISTANCES PLUMB CHAINED

S1/4 CORNER SECTION 36-84-40



DISTANCES PLUMB CHAINED

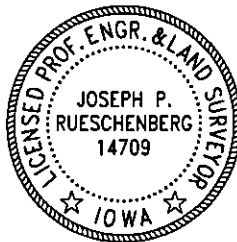
SE CORNER SECTION 36-84-40

I HEREBY CERTIFY THAT THIS LAND SURVEYING DOCUMENT WAS PREPARED AND THE RELATED SURVEY WORK WAS PERFORMED BY ME OR UNDER MY DIRECT PERSONAL SUPERVISION AND THAT I AM A DULY LICENSED LAND SURVEYOR UNDER THE LAWS OF THE STATE OF IOWA.

Joseph P. Rueschenberg SEP 15 2009
 JOSEPH P. RUESCHENBERG DATE

IA LICENSE NO. 14709

EXP. DATE DECEMBER 31, 2010



SE PROJECT NO. 20509
 DRAWN BY: LLL