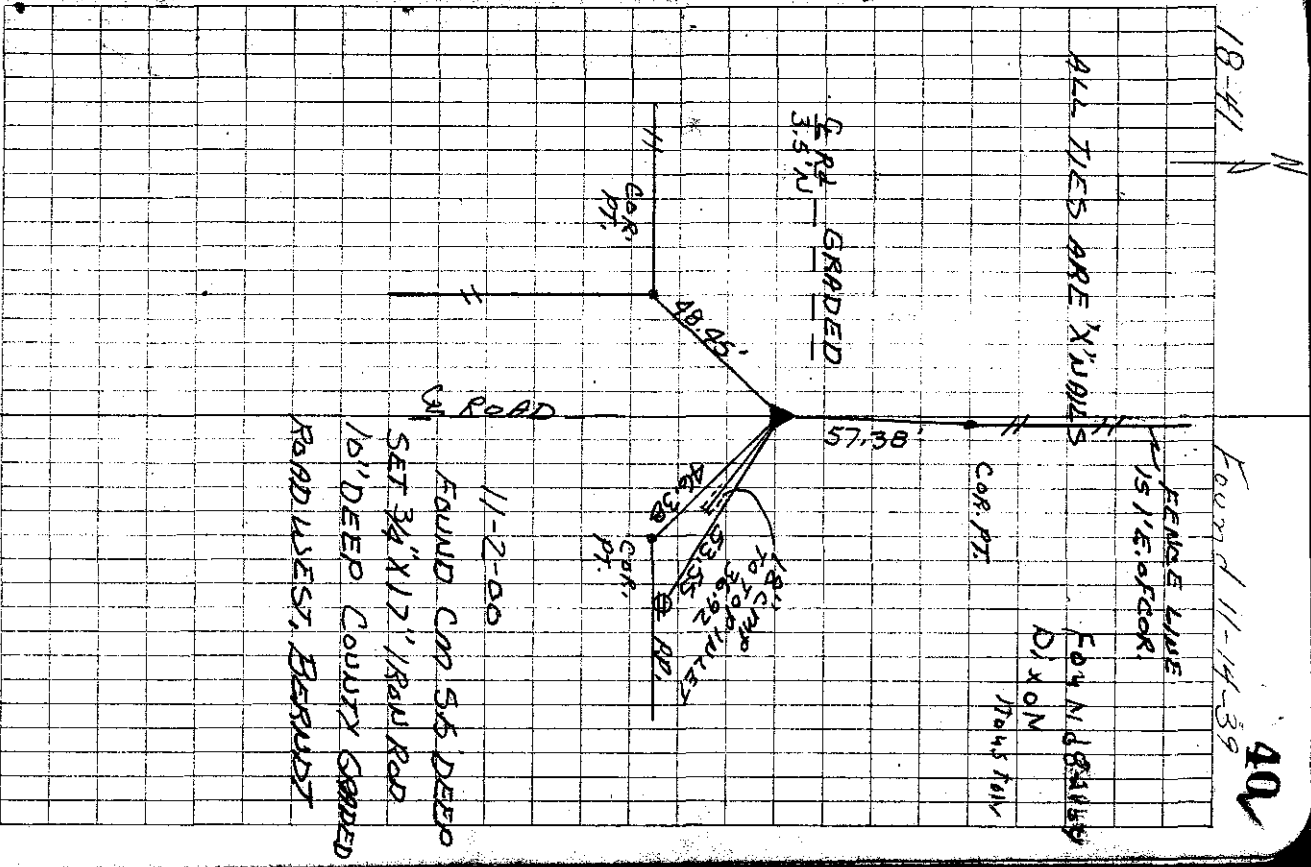


17/16	11-14-39	found 1 post on NW corner 12"
20/21	12" deep. Lowered and set C.M.	
Ties	from 4 spots	1 1/2 cor posts
41.7	SE	From 2 1/2 feet post
32.7	S	From cor post
38.3	SW.	1 steel post
92.1	NE	" " cor post
48.9	NW.	" " " "
54.7	NW	11 1/2 REF pole



11-2-00  
 FOUND C.M. 5 1/2 DEEP  
 SET 3 1/2" X 12" ROAD  
 10" DEEP COUNTY GRADED  
 ROAD WEST, BERRY

18-41

Found 11-14-39