

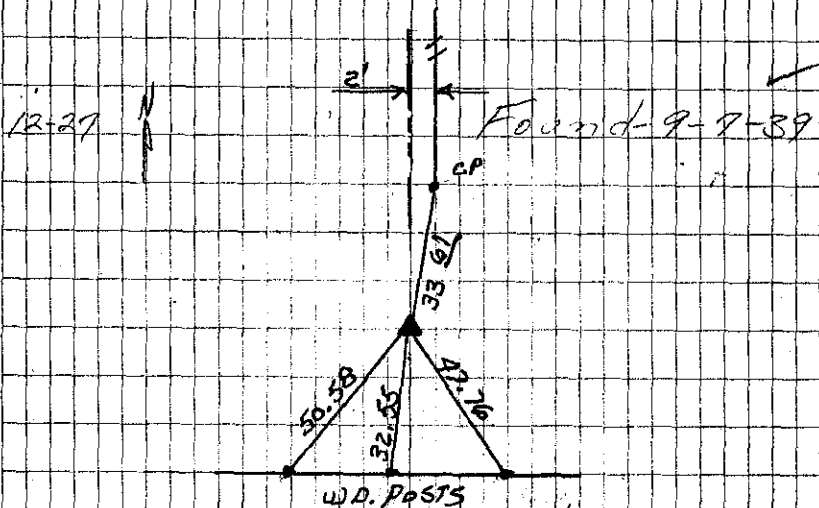
21-22 3-30-40 Dug 2'x4'x10' hole  
on fence N+S. No find  
924' W of CL of M.R.R.

16 9-7-39, found cultivator  
21 shank 5' long 3" deep.  
Lowered and set C.M.  
ties from x-spts in cor posts  
28.4 N. from cor posts  
32.2 N.W. " " cor post  
33.4 S. " " cor post  
39.6 S.W. " " cor post  
47.2 N.E. " " fence post

22-44-5

9-24-09

CRAWFORD CO. GRADED THE MILE BETWEEN



Found 8-24-59

DIXON HONSTON

9-24-09 THE COUNTY GRADED THE MILE BETWEEN  
1621 THE COR. WAS TIED OFF AND A 5/8"  
X 1/2" REBAR WAS SET 8" DEEP AFTER THE  
GRADING WAS COMPLETED, BERNDT, WOOD