

INDEXED km  
 FOLLOW UP \_\_\_\_\_  
 PROOFED \_\_\_\_\_  
 SCANNED \_\_\_\_\_

Instrument #: 2016-1058  
 05/24/2016 02:26:05 PM Total Pages: 1  
 PLC PLAT CORNER CER  
 Recording Fee: \$0.00 Transfer Tax: \$0  
 Denise Meeves, Recorder, Crawford County Iowa



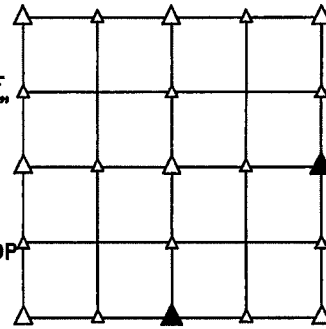
PREPARED BY - PAUL J. ASSMAN - CRAWFORD COUNTY ENGINEER, CRAWFORD COUNTY COURT HOUSE, DENISON, IOWA 51442 - PHONE (712)263-2449

**UNITED STATES PUBLIC LAND SURVEY CORNER CERTIFICATE  
 OF**

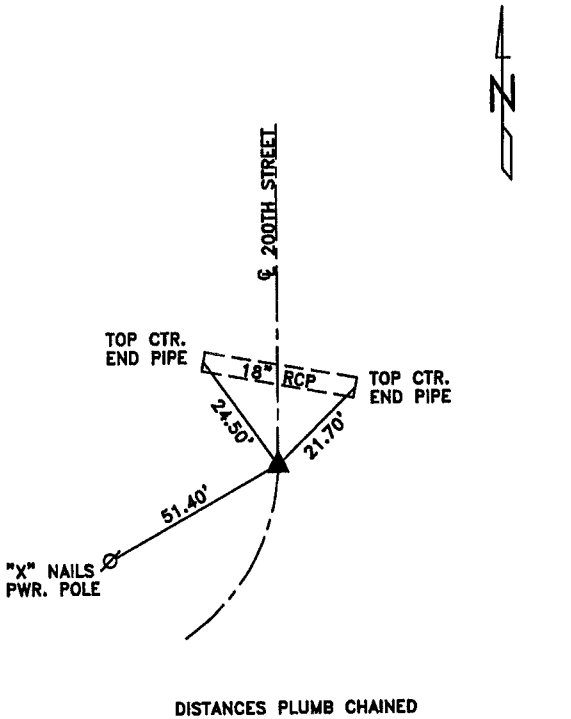
LAND SURVEY MONUMENT SITUATED IN SECTION 15, T 83 N, R 40 W OF  
 THE 5TH P.M., CRAWFORD COUNTY, IOWA.  
 PREVIOUSLY RECORDED IN BOOK \_\_\_\_\_, PAGE \_\_\_\_\_, OTHER \_\_\_\_\_

**MONUMENT DESCRIPTION AND REMARKS**

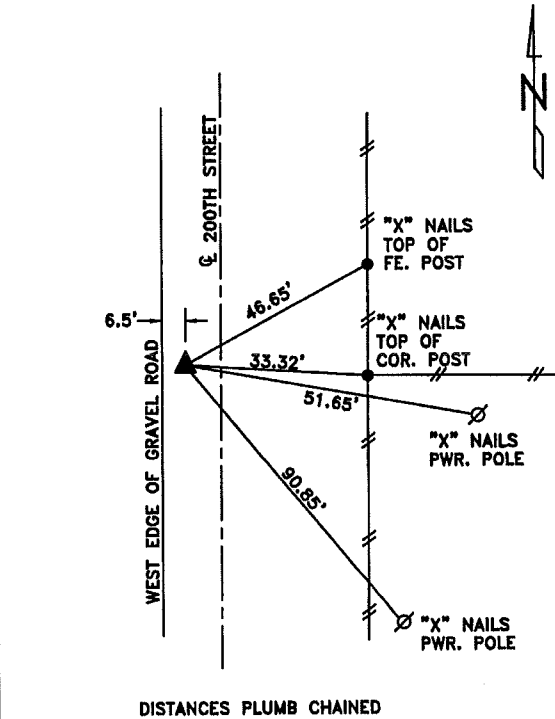
- S1/4 CORNER - FOUND CM W/BRASS CAP 2.1' DEEP WITH PIECES OF BROKEN BRICK ON TOP OF CM. SET 5/8" DIA. X 18" IRON PIN ON SO. SIDE OF CM 0.1' BELOW TOP OF CM. RAISED WITH 5/8" DIA. X 18" IRON PIN W/RED CAP #11982 0.5' DEEP.
- E1/4 CORNER - FOUND CM W/BRASS CAP 2.0' DEEP. SET 5/8" DIA. X 18" IRON PIN ON SO. SIDE OF CM 0.1' BELOW TOP OF CM. RAISED WITH 5/8" DIA. X 18" IRON PIN W/RED CAP #11982 0.5' DEEP.



**PLAN VIEW SHOWING RELATIVE LOCATION OF MONUMENT AND REFERENCE POINTS.**



S1/4 CORNER SECTION 15-83-40

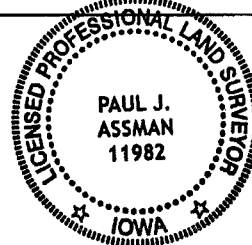


E1/4 CORNER SECTION 15-83-40

I HEREBY CERTIFY THAT THIS LAND SURVEYING DOCUMENT WAS PREPARED AND THE RELATED SURVEY WORK WAS PERFORMED BY ME OR UNDER MY DIRECT SUPERVISION AND THAT I AM A DULY LICENSED LAND SURVEYOR UNDER THE LAWS OF THE STATE OF IOWA.

Paul J. Assman 5/24/16  
 PAUL J. ASSMAN DATE

IA LICENSE NO. 11982 EXP. DATE DECEMBER 31, 2016



SE PROJECT NO. 05515  
 DRAWN BY: LLL