

Crawford County Recorder  
Denise Meeves  
**Fee Book 2009-2067**  
07/31/2009 @11:23AM  
PLC PLAT CORNER CER  
Book: Page: # Pages: 1  
Total Fees: \$0.00

PREPARED BY: MICKAEL F. BERNDT - CRAWFORD COUNTY ENGINEER'S OFFICE - COURTHOUSE - DENISON, IA. - 712-263-2449

**UNITED STATES PUBLIC LAND SURVEY CORNER CERTIFICATE  
OF**

**LAND SURVEY MONUMENT SITUATED IN DENISON TOWNSHIP, THE NORTHWEST CORNER  
OF SECTION 19, T-83N, R-39W OF THE FIFTH P.M. CRAWFORD COUNTY, IOWA.**

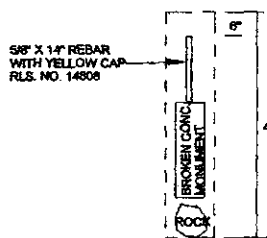
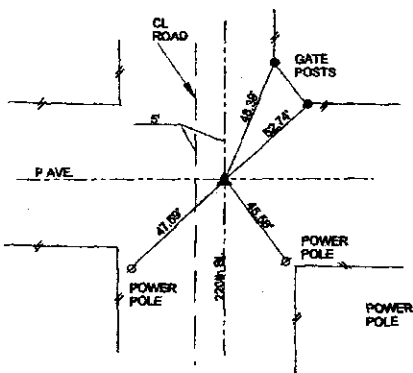
PREVIOUSLY RECORDED AS NO. 99-3322

**MONUMENT DESCRIPTION AND REMARKS**

NORTHWEST CORNER SEC. 19-83-39  
DATE SET: 07-29-09

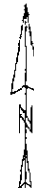
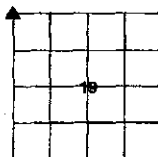
A BROKEN CONCRETE MONUMENT WAS FOUND BY MICHEAL SEMKE (RLS NO. 10318) ON 12/10/99. HE TIED IT OFF AND FILED A CORNER CERTIFICATE. THE CONCRETE MONUMENT WAS BLADED OUT BY A COUNTY ROAD GRADER ON 07/28/09. IN RESETTING THE CORNER I FOUND THE ORIGINAL MONUMENT A 4" X 6" X 8" ROCK AS RECORDED IN THE CORNER TIE BOOKS LOCATED IN THE COUNTY ENGINEERS OFFICE. A 10" DIA. X 4' DEEP HOLE WAS DUG. THE ROCK WAS PLACED IN THE HOLE. THE BROKEN CONCRETE MONUMENT AND A 5/8" X 14" REBAR WITH A YELLOW CAP RLS NO. 14808 WERE PLACED AT THE INTERSECTION OF THE CORNER TIES. THE REBAR IS 6" DEEP.

NORTHWEST CORNER SEC. 19-83-39



ALL DISTANCES ARE SLOPED CHAINED  
ALL TIES ARE "X" NAILS UNLESS NOTED.

CORNER: NORTHWEST  
SECTION: 19  
TOWNSHIP: 83N  
RANGE: 39W



**CERTIFICATION:**

I HEREBY CERTIFY THAT THIS LAND SURVEYING DOCUMENT WAS PREPARED AND THE RELATED SURVEY WORK WAS PERFORMED BY ME OR UNDER MY DIRECT PERSONAL SUPERVISION AND THAT I AM A DULY LICENSED LAND SURVEYOR UNDER THE LAWS OF THE STATE OF IOWA.

*Michael F. Berndt*  
Signature

7-30-09  
Date of Survey

MICKAEL F. BERNDT  
Typed Name

14808  
L.S. No.

Dec. 31, 2010  
License Renewal Date

Pages covered by this seal 1

