

INDEXED DM
FO: LOW UP DM
PROOFED DM

FILED DENISON, IOWA
CRAWFORD COUNTY

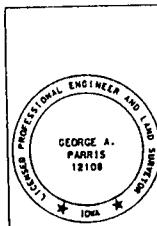
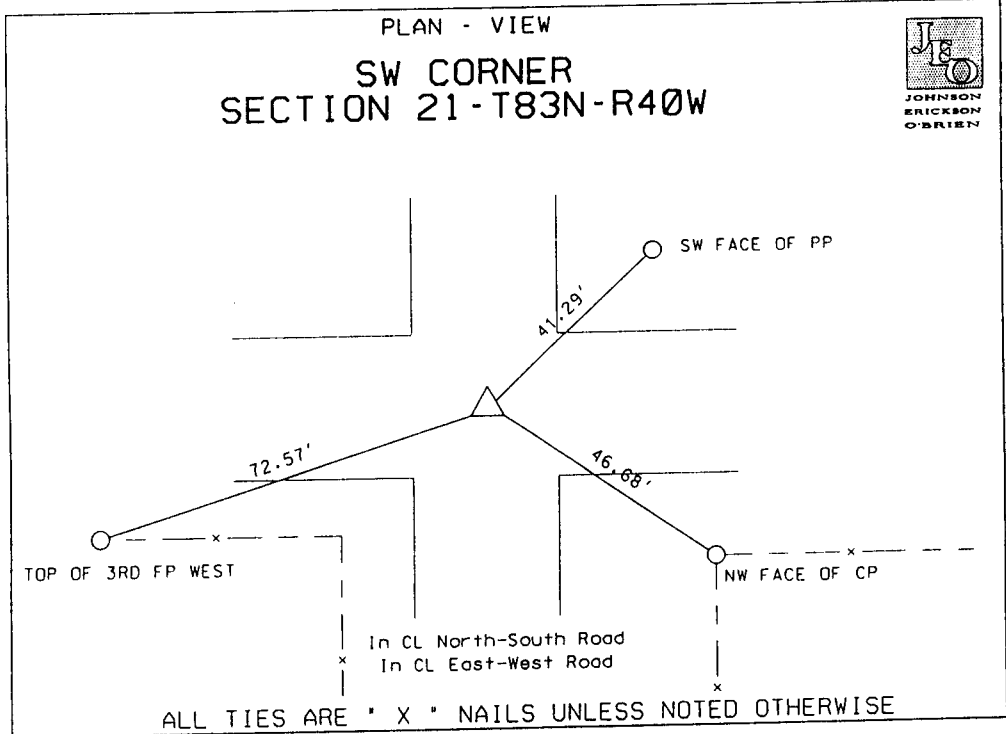
97 MAY -8 AM 10: 38
INST. NO. 97-1168
DENISE MEEVES, RECORDER
Denise Meeves
FEE \$ 6.00

GEORGE A. PARRIS, PE, LS, JOHNSON-ERICKSON-O'BRIEN, CARROLL, IOWA 51401, 712-792-9711

LAND SURVEY MONUMENT SITUATED IN SECTION 21,
TOWNSHIP 83N, RANGE 40W, OF THE 5TH P.M.,
CRAWFORD COUNTY, IOWA.

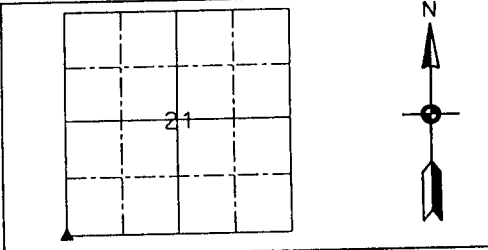
MONUMENT DESCRIPTION AND REMARKS:

Found $\frac{5}{8}$ " rebar, no cap, 14 in. deep.



I hereby certify that this land surveying document was prepared and the related survey work was performed by me or under my direct personal supervision and that I am a duly licensed Land Surveyor under the laws of the State of Iowa.

George A. Parris 4/24/97
George A. Parris
License number: 12108
My license renewal date is December 31, 1998
Sheets covered by this seal:
Sheet 1 - 1



List Corner to be Indexed

Corners	Section	Twp	Range
SW CORNER	21	83	40