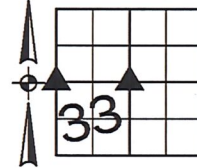


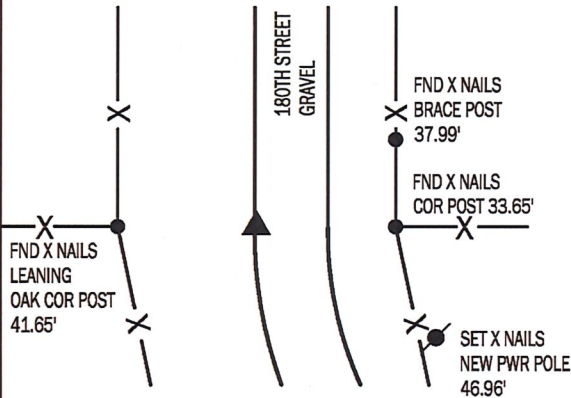
PREPARED BY AND RETURN TO: MIKE SCHULTE, SCHULTE SURVEYING, INC., 2003 390TH STREET, WESTSIDE, IA 51467 (712) 790-3489

UNITED STATES PUBLIC LAND SURVEY CORNER CERTIFICATE OF
 LAND SURVEY MONUMENTS SITUATED IN SECTION 33, TOWNSHIP 83 NORTH, RANGE 40 WEST, OF THE FIFTH
 PRINCIPAL MERIDIAN, CRAWFORD COUNTY, IOWA. PREVIOUSLY RECORDED IN N/A IN COUNTY
 RECORDER'S OFFICE. (book, page instrument number)



W1/4 CORNER

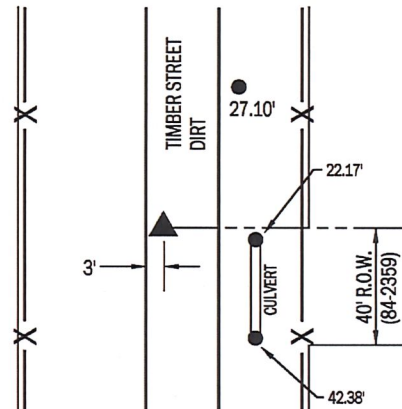
FND 5/8" REBAR YPC 8893 4" DEEP
 N: 7222238.13 E: 16558503.19



NO RECORDED TIES FOUND. USED COUNTY ENGINEER'S TIES TO FIND 5/8" REBAR WITH YPC 8893 4" DEEP. MANY OF THE TIES ARE STILL THERE AND FIT WELL. ACCEPTED MONUMENT AND RETIED SINCE THERE ARE NO CURRENT RECORDED TIES.

CENTER SECTION

SET 5/8" REBAR YPC 17979 6" DEEP
 N: 7222238.51 E: 16561161.00



* NOTE: ALL TIES ARE SET 5/8" REBAR.

NO RECORDED TIES OR COUNTY ENGINEER'S TIES WERE FOUND. AN EASEMENT FOR RIGHT OF WAY EAST OF THE CORNER WAS FOUND. THE AREA SITS IN A LOW AREA AND ANY MONUMENTATION WOULD EASILY BE OBLITERATED. I REVIEWED AERIALS OF THE AREA AND SEEN THAT THERE WERE ONCE FENCES DIVIDING THE FARMS EAST AND WEST OF THIS CORNER. THESE FENCES ARE NOW GONE. REVIEWED THE LOCATION OF THE EXISTING ENTRANCE CULVERT AND THE EASEMENT DESCRIPTION TO RESET THE CENTER OF SECTION. SET 5/8" REBAR WITH YPC 17979 6" DEEP.

I HEREBY CERTIFY THAT THIS LAND SURVEYING DOCUMENT WAS PREPARED BY ME OR UNDER MY DIRECT PERSONAL SUPERVISION AND THAT I AM A DULY LICENSED PROFESSIONAL LAND SURVEYOR UNDER THE LAWS OF THE STATE OF IOWA.

Mike Schulte
 MIKE SCHULTE
 2018/09/04
 DATE
 LICENSE NUMBER: 17979
 LICENSE RENEWAL DATE IS DECEMBER 31, 2019
 PAGES COVERED BY THIS SEAL: 1 OF 1



*All distances are measured horizontally unless noted.

LIST CORNERS TO BE INDEXED

CORNER	SECTION	TWP	RANGE
W1/4 COR	33	83	40
E1/4 COR	32	83	40
CENTER SEC	33	83	40

BASIS OF BEARING

laRCS ZONE 6 - US SURVEY FEET
 laRTN DERIVED - NAD83(2011)(EPOCH 2010.00)