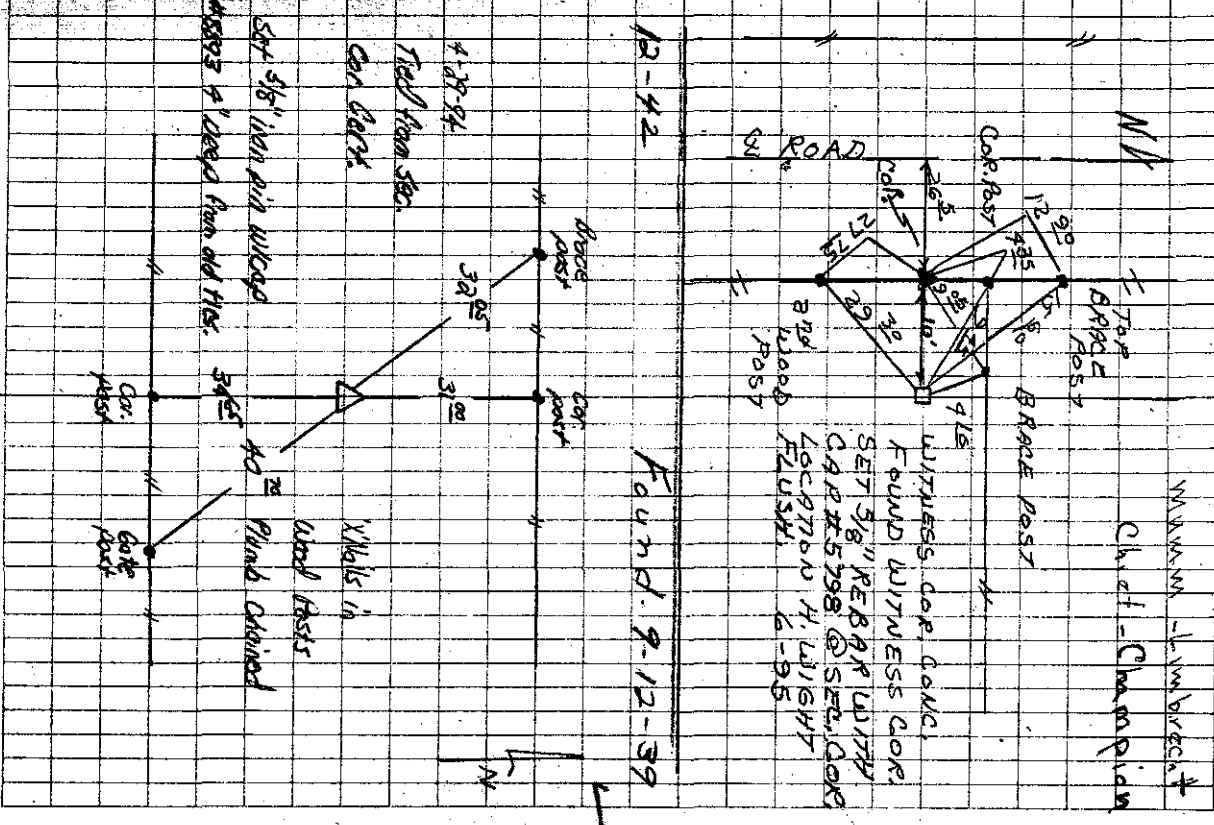


30-64-5

Found 4-13-72

MINNAPM - L.W. BRECKENRIDGE
Ch of - Champion

35-36 Using Mch. BK 54 PP 123 & Meadston's
BK 1 as reference, dug around roots
of 24" boxelder on east side of road
at junction of east road fence & fence from
east. Found Natl. rock 12"x12"x7' grown
into roots of boxelder. Set C.M. as
with 10' east of true corner. Iron
rod (1/2" dia) 100' east of with corner.
trees for with cor. Marked with x-spts
14.4 West of 8" boxelder 61.9 NE of cor post.
9.8 east of 24" boxelder 66.0 SE of 3rd
15.30 NW of marked rock post N of gate,
26 9-12-39 found 1 rock 8'x
35 10" x 12" - 24' deep brick bats
1 rock 6" x 8" x 8" - 35' deep
Lowered and set C.M.
ties from x-spts 127 cor posts
36.6 SE from cotton wood tree
31.0 S " " cor post
35.1 SW " " E gate post
34.4 N " " cor post
(GAD TIES)



Found 9-12-39

