

Crawford County Recorder  
 Denise Heeves  
**Fee Book 2011-1326**  
 06/06/2011 809:32AM  
 PLC PLAT CORNER CER  
 Book: Page: # Pages: 1  
 Total Fees: \$9.00

PREPARED BY - TERENCE E. CRAWFORD - SUNDQUIST ENGINEERING - 120 S. MAIN, DENISON, IOWA 51442 - PHONE (712) 263-8118

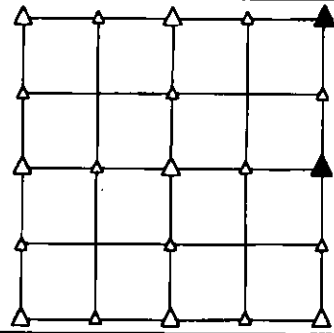
**UNITED STATES PUBLIC LAND SURVEY CORNER CERTIFICATE  
 OF**

LAND SURVEY MONUMENT SITUATED IN SECTION 3, T 83 N, R 40 W OF  
 THE 5TH P.M., CRAWFORD COUNTY, IOWA.  
 PREVIOUSLY RECORDED IN BOOK \_\_\_\_\_, PAGE \_\_\_\_\_, OTHER \_\_\_\_\_

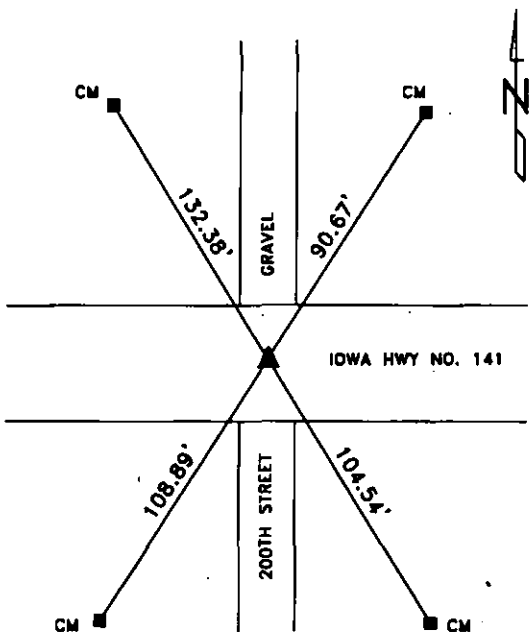
**MONUMENT DESCRIPTION AND REMARKS**

NE CORNER - FOUND PK NAIL IN PAVEMENT.

E1/4 CORNER - SET 5/8" DIA. X 18" IRON PIN W/YELLOW CAP  
 #8893 0.4' DEEP, RESET USING OLD CORNER TIES  
 AND 1976 SURVEY.

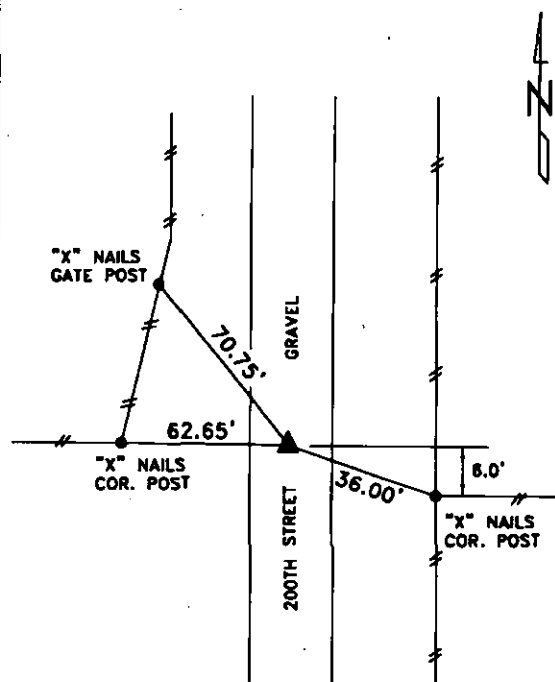


**PLAN VIEW SHOWING RELATIVE LOCATION OF MONUMENT AND REFERENCE POINTS.**



DISTANCES PLUMB CHAINED

NE CORNER SECTION 3-83-40

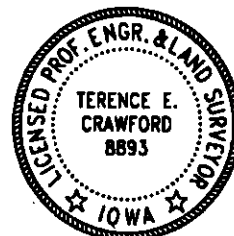


DISTANCES PLUMB CHAINED

E1/4 CORNER SECTION 3-83-40

I HEREBY CERTIFY THAT THIS LAND SURVEYING DOCUMENT WAS PREPARED  
 AND THE RELATED SURVEY WORK WAS PERFORMED BY ME OR UNDER MY  
 DIRECT PERSONAL SUPERVISION AND THAT I AM A DULY LICENSED LAND  
 SURVEYOR UNDER THE LAWS OF THE STATE OF IOWA.

*Terence E. Crawford* 4-2-11  
 TERENCE E. CRAWFORD DATE  
 IA LICENSE NO. 8893 EXP. DATE DECEMBER 31, 2011



SE PROJECT NO. 21711  
 DRAWN BY: LLL