

INDEXED DM  
 FOLLOW UP DM  
 PROOFED DM  
 SCANNED DM

REC 009585



Crawford County Recorder Denise Meeves  
 FEE BOOK 2006-0560 3/06/2006 @ 09:50AM  
 PLC PLAT CORNER CERBook: Page: #: 1  
 Total Fees: \$.00

PREPARED BY: MICKAEL BERNDT  
 CRAWFORD COUNTY ENGINEERS OFFICE - COURTHOUSE - DENISON, IA. - 712-263-2449

**UNITED STATES PUBLIC LAND SURVEY CORNER CERTIFICATE  
 OF**

LAND SURVEY MONUMENT SITUATED IN PARADISE TOWNSHIP, THE NORTHWEST  
 CORNER OF SECTION 4, T-83N, R-40W OF THE 5TH P.M. CRAWFORD COUNTY, IOWA.

PREVIOUSLY RECORDED AS NO.

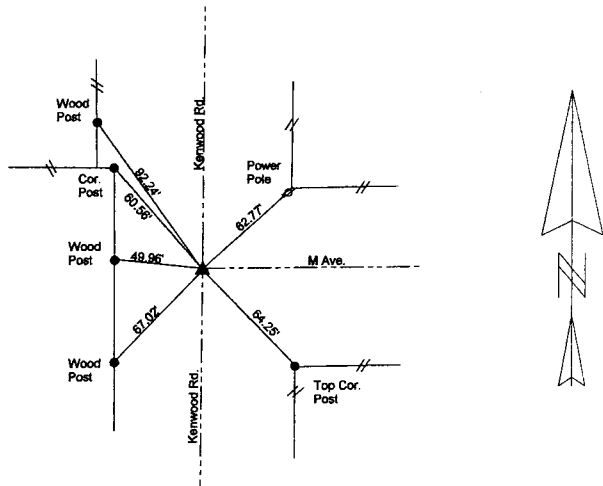
**MONUMENT DESCRIPTION AND REMARKS**

NORTHWEST CORNER SEC. 4-83-40

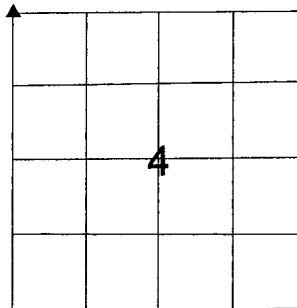
IN 2005 AN HMA OVERLAY WAS PLACED ON M14. THE CORNERS WERE TIED OFF AND RESET AFTER THE  
 OVERLAY PROJECT WAS COMPLETED. A 3" X 3/8" ROUND HEADED BOLT WAS DRIVEN IN THE ASPHALT  
 AND RECESSED 1/4" BELOW THE SURFACE. SET 10-11-05

NORTHWEST CORNER SEC. 4-83-40

ALL DISTANCES ARE SLOPED CHAINED



CORNER: NORTHWEST  
 SECTION: 4  
 TOWNSHIP: 83N  
 RANGE: 40W



**CERTIFICATION:**

I HEREBY CERTIFY THAT THIS LAND SURVEYING DOCUMENT WAS PREPARED AND THE RELATED  
 SURVEY WORK WAS PERFORMED BY ME OR UNDER MY DIRECT PERSONAL SUPERVISION AND  
 THAT I AM A DULY LICENSED LAND SURVEYOR UNDER THE LAWS OF THE STATE OF IOWA.

Michael F. Berndt 3-6-06  
 Signature Date of Survey  
 Mickael F. Berndt 14808 Dec. 31, 2006  
 Typed Name L.S. No. License Renewal Date

Pages covered by this seal 1

