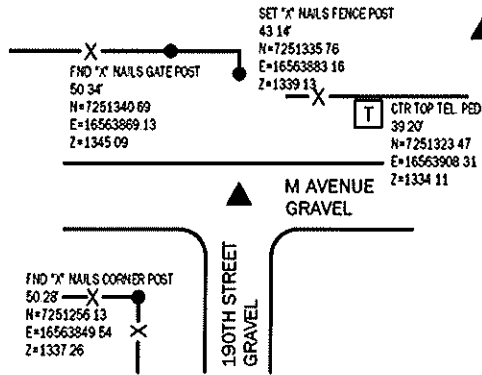


Sara Meseck, RECORDER
 Crawford County, Iowa
 Instr. Number: 2025-2118
 Recorded: 10/30/2025 at 3:24:02.0 PM
 Pages 1
 County Recording Fee: \$7.00
 Iowa E-Filing Fee: \$3.13
 Combined Fee: \$10.13
 Revenue Tax:

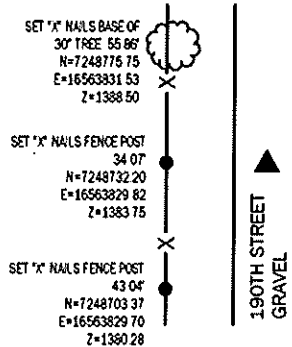
PREPARED BY AND RETURN TO: MIKE SCHULTE, SCHULTE SURVEYING, INC., 2003 390TH STREET, WESTSIDE, IA 51467 (712) 790-3489

UNITED STATES PUBLIC LAND SURVEY CORNER CERTIFICATE OF LAND SURVEY MONUMENTS SITUATED IN SECTION 03, TOWNSHIP 83 NORTH, RANGE 40 WEST, OF THE FIFTH PRINCIPAL MERIDIAN, CRAWFORD COUNTY, IOWA. PREVIOUSLY RECORDED IN SEE BELOW IN COUNTY RECORDER'S OFFICE.
(book, page instrument number)

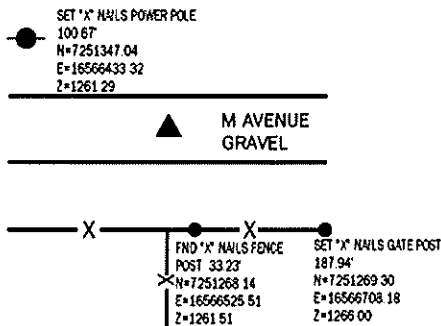
NW CORNER
 FND 1" REBAR 8" DEEP
 N=7251292.63 E=16563884.11 Z=1335.30
 USED CERTIFICATE RECORDED IN INSTRUMENT #97-2486 AND A METAL LOCATOR TO FIND A 1" REBAR 8" DEEP. VERIFIED WITH 3 REMAINING TIES.
 THIS CERTIFICATE IS BEING FILED TO UPDATE THE REFERENCE TIES.



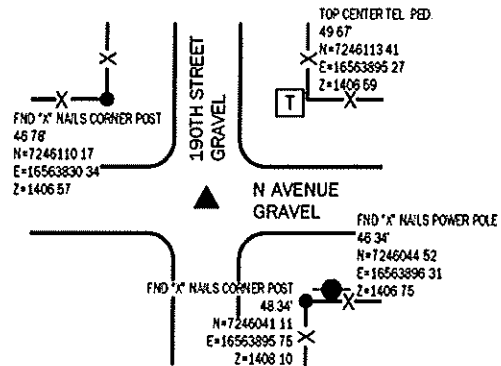
W1/4 CORNER
 SET 5/8" REBAR YPC #17979
 N=7248730.18 E=16563863.84 Z=1406.21
 NO RECORDED CORNER CERTIFICATE FOUND. USED COUNTY ENGINEER'S RECORD ALONG WITH CORNERS TO THE NORTH AND SOUTH TO PROPORTION CORNER POSITION. SEARCHED AREA, FOUND NOTHING. SET 5/8" REBAR YPC #17979 AT PROPORTIONED DISTANCE AND 33' FROM FENCE TO THE WEST.
 THIS CERTIFICATE IS BEING FILED DUE TO NONE OF RECORD.



N1/4 CORNER
 FND 1" REBAR 8" DEEP
 N=7251301.28 E=16566522.98 Z=1261.48
 NO RECORDED CORNER CERTIFICATE FOUND. USED COUNTY ENGINEER'S RECORD ALONG WITH A METAL LOCATOR TO FIND A 1" REBAR 8" DEEP. VERIFIED WITH 1 REMAINING TIE.
 THIS CERTIFICATE IS BEING FILED DUE TO NONE OF RECORD.



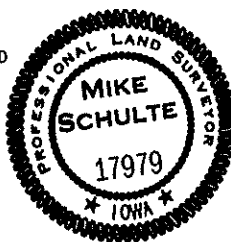
SW CORNER
 FND OPC #578XX 12" DEEP
 N=7246076.14 E=16563862.44 Z=1406.21
 USED CERTIFICATE RECORDED IN INSTRUMENT #98-3786 AND A METAL LOCATOR TO FIND A 5/8" REBAR OPC #578XX 12" DEEP. VERIFIED WITH 4 REMAINING TIES.
 THIS CERTIFICATE IS BEING FILED TO UPDATE THE FOUND MONUMENT.



BASIS OF BEARING
 IARCS ZONE 6 - US SURVEY FEET
 IARITH DERIVED - NAD83(2011)(EPOCH 2010.00)

I HEREBY CERTIFY THAT THIS LAND SURVEYING DOCUMENT WAS PREPARED BY ME OR UNDER MY DIRECT PERSONAL SUPERVISION AND THAT I AM A DULY LICENSED PROFESSIONAL LAND SURVEYOR UNDER THE LAWS OF THE STATE OF IOWA.

Mike Schulte
 MIKE SCHULTE
 LICENSE NUMBER 17979
 LICENSE RENEWAL DATE IS DECEMBER 31, 2026
 PAGES COVERED BY THIS SEAL: 1 OF 1



*All distances are measured horizontally unless noted.

LIST CORNERS TO BE INDEXED

CORNER	SECTION	TWP	RANGE
NW CORNER	03	83	40
NE CORNER	04	83	40
SE CORNER	33	84	40
SW CORNER	34	84	40
N1/4 CORNER	03	83	40
S1/4 CORNER	34	84	40
W1/4 CORNER	03	83	40
E1/4 CORNER	04	83	40
SW CORNER	03	83	40
NW CORNER	10	83	40
NE CORNER	09	83	40
SE CORNER	04	83	40

SCHULTE SURVEYING, INC.

DRAWN BY: SLG
 PROJ NUMBER: 25-093