

INDEXED KM  
 FILED PLC  
 PREPARED \_\_\_\_\_  
 SURVEYED \_\_\_\_\_

Instrument #: 2015-1043  
 05/21/2015 10:57:39 AM Total Pages: 1  
 PLC PLAT CORNER CER  
 Recording Fee: \$7.00 Transfer Tax: \$0  
 Denise Meeves, Recorder, Crawford County Iowa

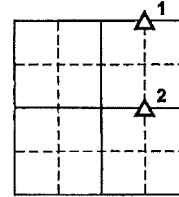


PREPARED BY AND RETURN TO: JEFFREY M. KRUEGER P.L.S., KRUEGER SURVEYING, P.C., 2425 190TH STREET, NEMAHA, IA 50567 PH. (712) 660-2264

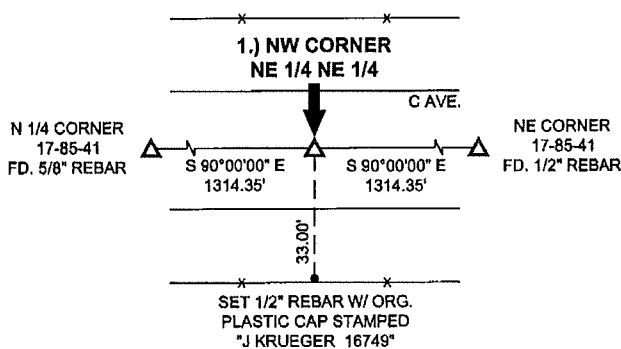
**UNITED STATES PUBLIC LAND SURVEY CORNER CERTIFICATE  
 OF**

LAND SURVEY MONUMENTS SITUATED IN SECTION 17,  
 TOWNSHIP 85 NORTH, RANGE 41 WEST  
 OF THE 5TH P.M., CRAWFORD COUNTY, IOWA.

SECTION 17



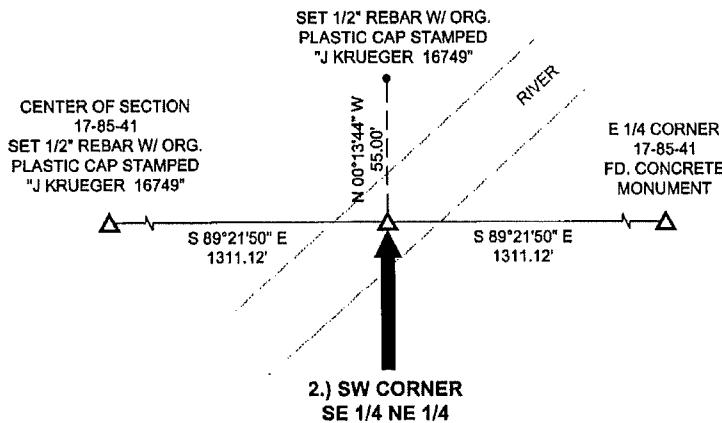
Not to Scale



**1.) NW CORNER  
 NE 1/4 NE 1/4  
 17-85-41  
 CRAWFORD COUNTY, IOWA:**

NO RECORD OF CORNER. SET 1/2" REBAR WITH ORANGE PLASTIC CAP STAMPED "J KRUEGER 16749", 6" DEEP, EQUIDISTANT AND ONLINE BETWEEN THE N 1/4 CORNER AND NE CORNER.

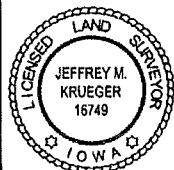
THIS CERTIFICATE IS BEING PREPARED BECAUSE: THERE IS NO CERTIFICATE FOR THE CORNER ON FILE WITH THE RECORDER OF THE COUNTY IN WHICH THE CORNER IS LOCATED.



**2.) SW CORNER  
 SE 1/4 NE 1/4  
 17-85-41  
 CRAWFORD COUNTY, IOWA:**

NO RECORD OF CORNER. ESTABLISHED POSITION EQUIDISTANT AND ONLINE BETWEEN THE CENTER OF SECTION AND E 1/4 CORNER. THIS POSITION FALLS IN THE RIVER. SET WITNESS PIN 55.00 NORTH.

THIS CERTIFICATE IS BEING PREPARED BECAUSE: THERE IS NO CERTIFICATE FOR THE CORNER ON FILE WITH THE RECORDER OF THE COUNTY IN WHICH THE CORNER IS LOCATED.



I hereby certify that this land surveying document was prepared and the related survey work was performed by me or under my direct personal supervision and that I am a duly licensed Land Surveyor under the laws of the State of Iowa.

*Jeffrey M. Krueger* 5/18/2015  
 Jeffrey M. Krueger Date:  
 License Number 16749  
 My license renewal date is December 31, 2016  
 Pages covered by this seal 1

S.M. = SURVEY MARKER  
 PLASTIC REFERENCE DISK  
 AS SHOWN BELOW



PN: 2015-45 DRAWN: JMK

List Corners to be Indexed

Corners	Section	Township	Range
1) NW NE 1/4 NE 1/4	17	85	41
2) SW SE 1/4 NE 1/4	17	85	41