

INDEXED PP
COLLECTED UP
RECORDED
SERIALIZED

Prepared by: Nathan H. Carlson Address: 3701 12th Street N, Suite 206, Phone: 320-253-9495
St. Cloud, MN 56303

UNITED STATES PUBLIC LAND SURVEY CORNER CERTIFICATE FOR

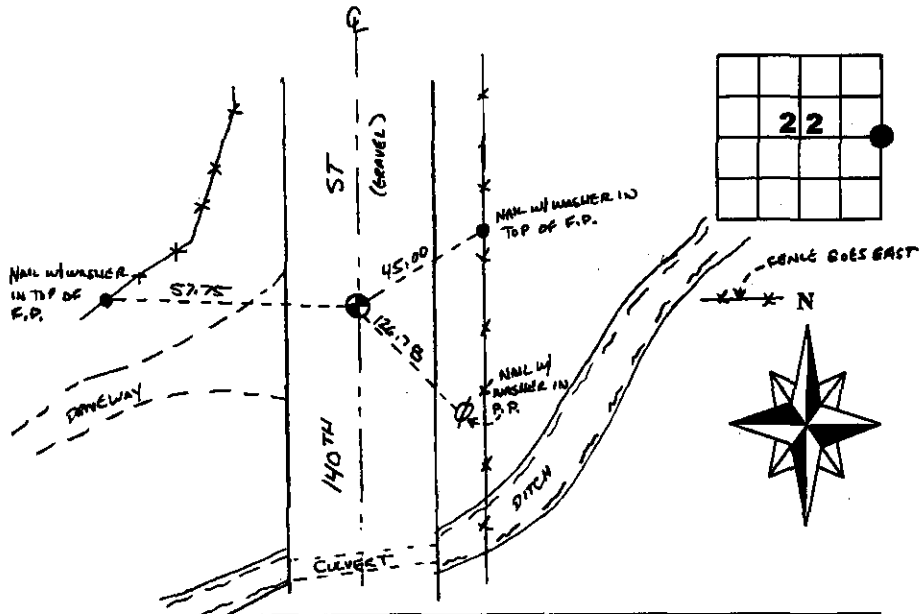
Land survey monuments situated in Section 22, Township 85N
Range 41W, of the Fifth Principal Meridian, Crawford County, Iowa.

Previously recorded in _____ in County Recorder's Office.

(Show reason for preparing this certificate, the evidence and detailed procedures used in establishing the corner positions & monumentation found or placed.)
MONUMENT DESCRIPTION AND REMARKS: Highway Department notes and corner record 92-0396 filed by Leland V. Fagan indicate a monument at the corner position. Searched the area and found no evidence the monument or reference ties. A 1/2" rebar with orange plastic cap marked LS 19314 was set at the centerline of the north/south road and the projection of the fence line east. A distance of 2631.44 feet was measured to the NE section corner and a distance of 2648.37 feet was measured to the SE section corner. Established new reference ties as noted below.

PLAN - VIEW

(Show a minimum of three reference ties to durable physical objects, relevant monuments and physical conditions that will enable recovery of the corner.)



SLST-3/98

I hereby certify that this land surveying document was prepared and the related survey work was performed by me or under my direct personal supervision and that I am a duly licensed Land Surveyor under the laws of the State of Iowa.

Nathan H. Carlson 1/4/2012
Signature Date

Typed/Printed Name: Nathan H. Carlson

License Number: 19314

My license renewal date is December 31, 2012

Pages or sheets covered by this seal: This sheet

Corners to be Indexed

Corners	Section	Twp.	Range
E1/4	22	85N	41W