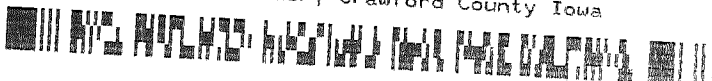


INDEXED DM/DM
 FOLLOW UP KM
 PROOFED _____
 SCANNED DM

Instrument #: 2016-1594
 07/28/2016 11:11:06 AM Total Pages: 1
 PLC PLAT CORNER CER
 Recording Fee: \$0.00 Transfer Tax: \$0
 Denise Meeves, Recorder, Crawford County Iowa



PREPARED BY: PAUL ASSMAN-CRAWFORD COUNTY ENGINEER'S OFFICE-COURTHOUSE-DENISON, IA.-712-263-2449

UNITED STATES PUBLIC LAND SURVEY CORNER CERTIFICATE OF

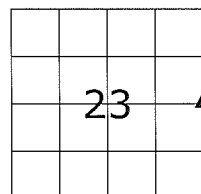
LAND SURVEY MONUMENT SITUATED IN SOLDIER TOWNSHIP, THE EAST 1/4 CORNER OF SECTION 23, T-85N,
R-41W OF THE FIFTH P.M. CRAWFORD COUNTY, IOWA.

PREVIOUSLY RECORDED AS NO. 97-2675

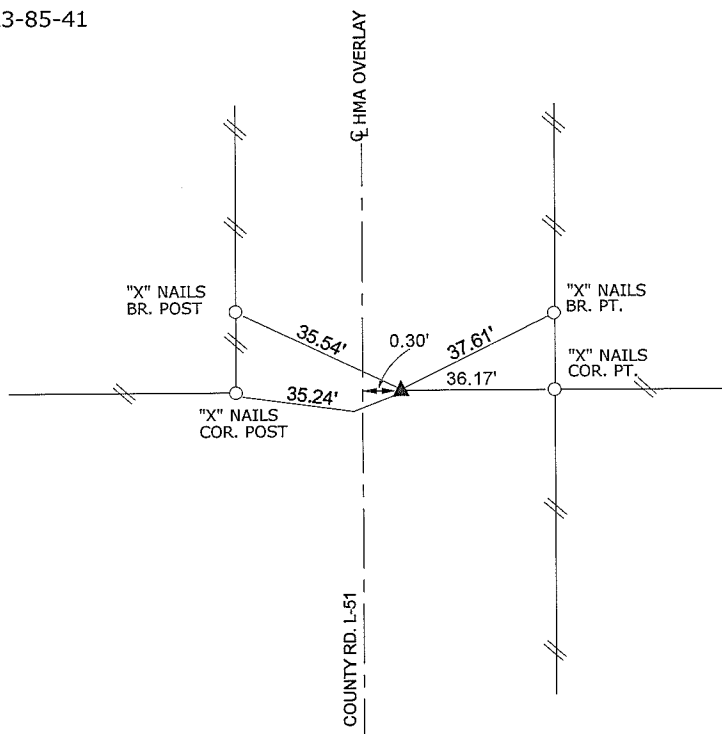
MONUMENT DESCRIPTION AND REMARKS

EAST 1/4 CORNER SEC. 23-85-41

FOUND BOLT FLUSH WITH ASPHALT USING PREVIOUS
TIES. COMPLETED HMA OVERLAY, RESET AND RETIED
CORNER - SET CARRIAGE BOLT 0.05' DEEP



EAST 1/4 CORNER SEC. 23-85-41



ALL DISTANCES ARE PLUMB CHAINED

CERTIFICATION:

I HEREBY CERTIFY THAT THIS LAND SURVEYING DOCUMENT WAS PREPARED AND THE RELATED SURVEY WORK WAS PERFORMED BY ME OR UNDER MY DIRECT PERSONAL SUPERVISION AND THAT I AM A DULY LICENSED LAND SURVEYOR UNDER THE LAWS OF THE STATE OF IOWA.

Paul J. Assman
Signature

7/27/16
Date of Survey

PAUL J. ASSMAN
Typed Name

11982
L.S. No.

12-31-16
License Renewal Date

Pages covered by this seal 1

