

UNITED STATES PUBLIC LAND SURVEY CORNER CERTIFICATE OF

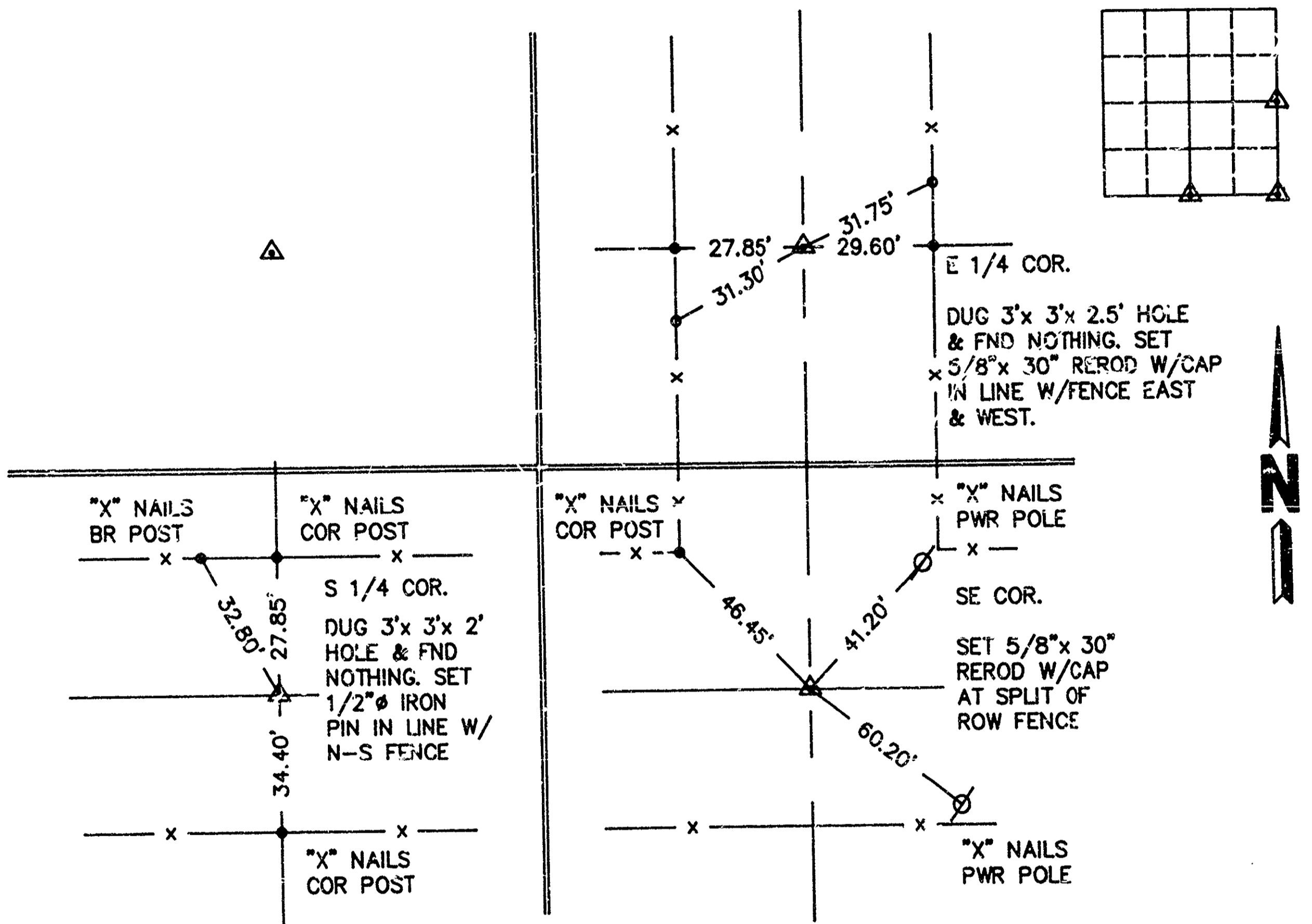
Land Survey Monuments in Section 24, Township 85, Range 41, of the Fifth Principal Meridian, CRAWFORD County, Iowa.
Previously recorded in _____ in County Recorder's Office.
(book, page, document number, etc.)

(Show reason for preparing this certificate, the evidence and detailed procedures used in establishing the corner positions and monumentation found or placed.)

Monument Description and Remarks: _____

PLAN - VIEW

(Show a minimum of three reference ties to durable physical objects, relevant monuments and physical conditions that will enable recovery of the corner.)



I hereby certify that this survey work was completed and this certificate was prepared by me or under my direct personal supervision and that I am a duly registered land surveyor under the laws of the state of Iowa.

Signature: Ward C. Hillhouse, Jr.
Name typed or printed: Ward C. Hillhouse, Jr.

Date: 03/30/93 Reg. No. 6806



SEAL

FILED DENISE JORGENSEN, IOWA
CRAWFORD COUNTY

93 APR -2 AM 10:41

93-0986

DENISE JORGENSEN, RECORDER

Fee \$5.00

INDEXED ME
FOLLOW UP _____
PROOFED _____

List Corners to be Indexed			
Corners	Section	Twp	Range
S 1/4 COR.	24	85	41
SE COR.	24	85	41
E 1/4 COR.	24	85	41

File No. 93033



M.H.F. ENGINEERING, P.C.
ENGINEERS - LAND SURVEYORS
Jefferson, Iowa 50129 Ph. (515)386-4101