

RECEIVED
 FOLLOW UP
 PROOFED
 SCANNED

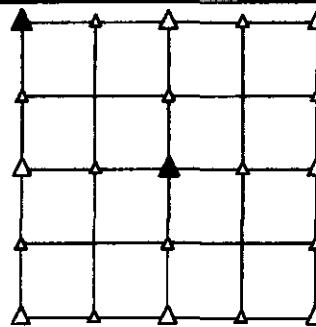
PREPARED BY -- JOSEPH P. RUESCHENBERG -- SUNDQUIST ENGINEERING -- 120 S. MAIN, DENISON, IOWA 51442 -- PHONE (712) 263-8118

UNITED STATES PUBLIC LAND SURVEY CORNER CERTIFICATE
OF

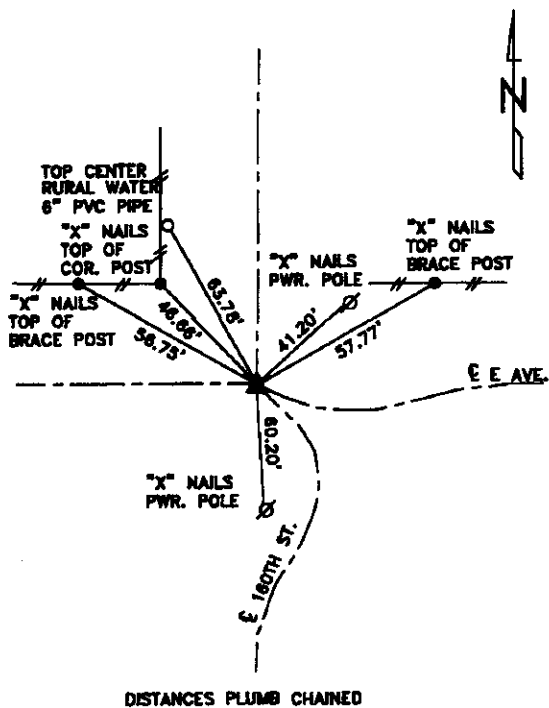
LAND SURVEY MONUMENT SITUATED IN SECTION 30, T 85 N, R 40 W OF
 THE 5TH P.M., CRAWFORD COUNTY, IOWA.
 PREVIOUSLY RECORDED IN BOOK _____, PAGE _____, OTHER _____

MONUMENT DESCRIPTION AND REMARKS

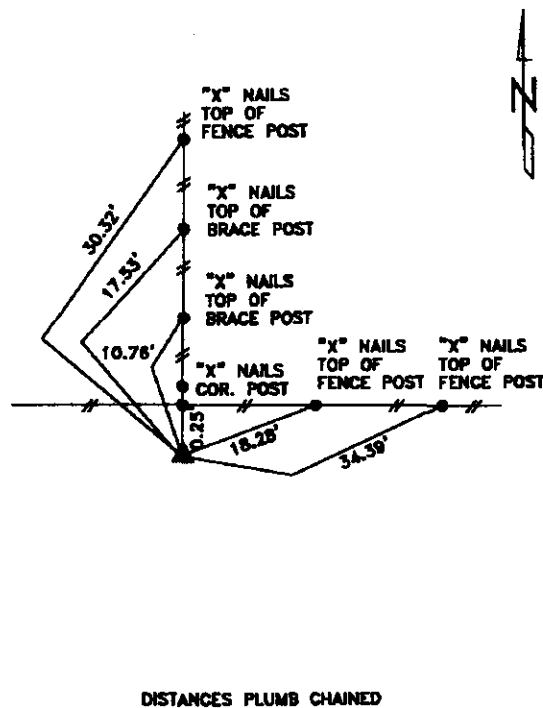
NW CORNER - FOUND IRON PIN W/YELLOW CAP #6806 0.8' DEEP
 ON CENTERLINE WITH ROADS NORTH AND WEST.
 CENTER - SET 5/8" DIA. X 18" IRON PIN W/ORANGE CAP
 #14709 FLUSH, SET FROM LOCAL EVIDENCE.



PLAN VIEW SHOWING RELATIVE LOCATION OF MONUMENT AND REFERENCE POINTS.



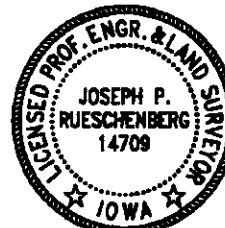
DISTANCES PLUMB CHAINED
 NW CORNER SECTION 30-85-40



DISTANCES PLUMB CHAINED
 CENTER OF SECTION 30-85-40

I HEREBY CERTIFY THAT THIS LAND SURVEYING DOCUMENT WAS PREPARED
 AND THE RELATED SURVEY WORK WAS PERFORMED BY ME OR UNDER MY
 DIRECT PERSONAL SUPERVISION AND THAT I AM A DULY LICENSED LAND
 SURVEYOR UNDER THE LAWS OF THE STATE OF IOWA.

Joseph P. Rueschenberg 6-3-2013
 JOSEPH P. RUESCHENBERG DATE
 IA LICENSE NO. 14709 EXP. DATE DECEMBER 31, 2014



SE PROJECT NO. 22013
 DRAWN BY: LLI