

INDEXED DM/DM  
 FOLLOW UP KM  
 PROOFED \_\_\_\_\_  
 SCANNED DM

Instrument #: 2016-1592  
 07/28/2016 11:11:06 AM Total Pages: 1  
 PLC PLAT CORNER CER  
 Recording Fee: \$0.00 Transfer Tax: \$0  
 Denise Meeves, Recorder, Crawford County Iowa



PREPARED BY: PAUL ASSMAN-CRAWFORD COUNTY ENGINEER'S OFFICE-COURTHOUSE-DENISON, IA.-712-263-2449

## UNITED STATES PUBLIC LAND SURVEY CORNER CERTIFICATE OF

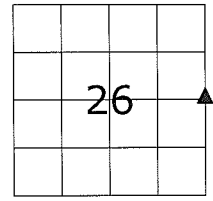
LAND SURVEY MONUMENT SITUATED IN SOLDIER TOWNSHIP, THE EAST 1/4 CORNER OF SECTION 26, T-85N,  
R-41W OF THE FIFTH P.M. CRAWFORD COUNTY, IOWA.

PREVIOUSLY RECORDED AS NO. 97-2687

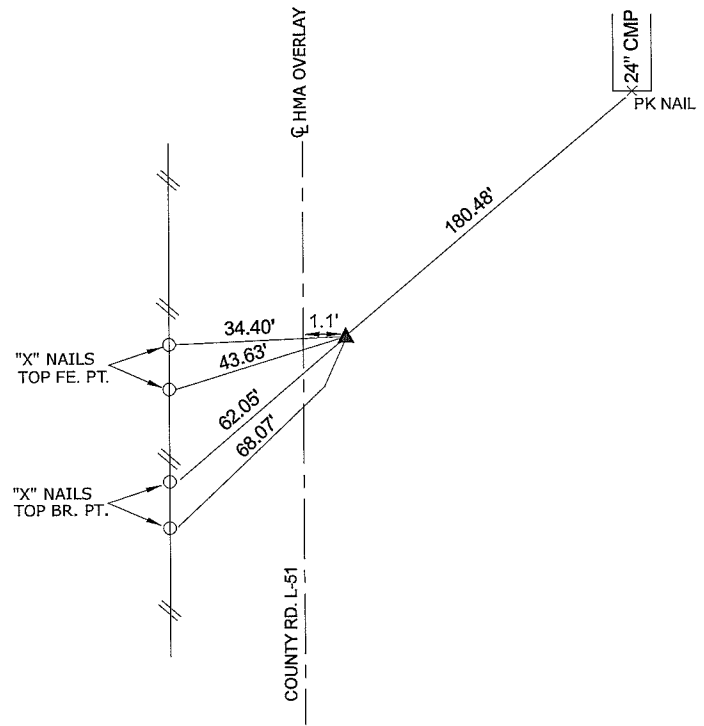
### MONUMENT DESCRIPTION AND REMARKS

EAST 1/4 CORNER SEC. 26-85-41

FOUND BOLT FLUSH WITH ASPHALT USING PREVIOUS TIES. COMPLETED HMA OVERLAY, RESET AND RETIED CORNER - SET CARRIAGE BOLT 0.05' DEEP



EAST 1/4 CORNER SEC. 26-85-41



ALL DISTANCES ARE PLUMB CHAINED

<b>CERTIFICATION:</b> I HEREBY CERTIFY THAT THIS LAND SURVEYING DOCUMENT WAS PREPARED AND THE RELATED SURVEY WORK WAS PERFORMED BY ME OR UNDER MY DIRECT PERSONAL SUPERVISION AND THAT I AM A DULY LICENSED LAND SURVEYOR UNDER THE LAWS OF THE STATE OF IOWA.		
 Signature	<u>7/27/16</u> Date of Survey	
PAUL J. ASSMAN	11982	12-31-16
Typed Name	L.S. No.	License Renewal Date
Pages covered by this seal <u>1</u>		

