

96 NOV 26 AM 9:48

HIST. NO. 96-3230
DENISE MEEVES, RECORDER
Denise Meeves
FEE \$6.00

INDEXED
FILED
FOLLOW UP
MVC

This document prepared by: Semke & Associates - 712-792-2276
Michael G. Semke, L.S.#10318 - 608 N. Court St., Carroll, Iowa

UNITED STATES PUBLIC LAND SURVEY CORNER CERTIFICATE
OF

Land Survey Monuments situated in Section 27, Township 85, Range 41, of the Fifth Principal Meridian, Crawford County, Iowa. Previously recorded in _____ in County Recorder's Office.

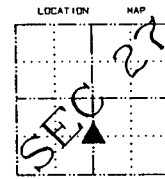
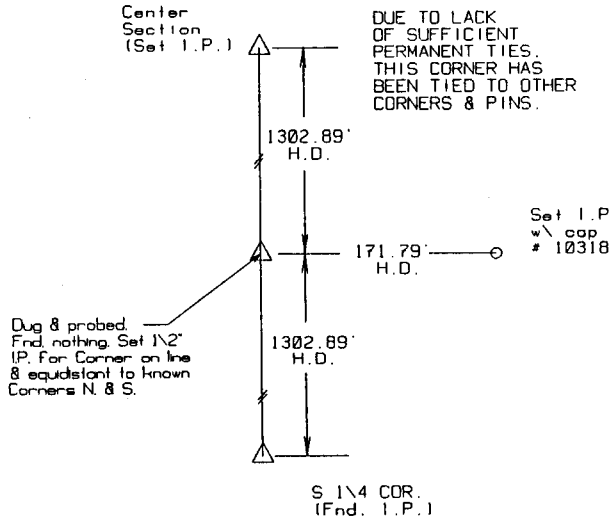
(book, page, document number, etc.)

(Show reason for preparing this certificate, the evidence and detailed procedures used in establishing the corner positions and monumentation found or placed.)

PLAN - VIEW

(Show a minimum of three reference ties to durable physical objects, relevant monuments and physical conditions that will enable recovery of the corner.)

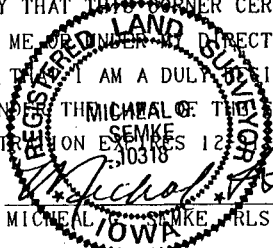
NW COR
SW 1/4 SE 1/4
27-85-41



NOTE:
ALL TIES
HORIZONTAL
DISTANCE

I HEREBY CERTIFY THAT THIS CORNER CERTIFICATE WAS PREPARED BY ME OR UNDER MY DIRECT PERSONAL SUPERVISION AND THAT I AM A DULY REGISTERED LAND SURVEYOR UNDER THE SEAL OF THE STATE OF IOWA. MY REGISTRATION EXPIRES 12/31/97.

11-25-96
DATE



MICHAEL G. SEMKE, RLS NO 10318

List Corners to be Indexed			
Corners	Section	Twp	Range
NW COR			
SW 1/4	27	85	41
SE 1/4			
NE COR			
SE 1/4	27	85	41
SW 1/4			