

INDEX VAC  
 SCAN \_\_\_\_\_  
 FOLLOW UP \_\_\_\_\_  
 PROOF \_\_\_\_\_

Instrument #: 2025-0397  
 02/25/2025 08:25:39 AM Total Pages: 1  
 PLC PLAT COR CERT  
 Recording Fee: \$0.00 Transfer Tax: \$0  
 Sara Neseck, Recorder, Crawford County Iowa



PREPARED BY: PAUL ASSMAN-CRAWFORD COUNTY ENGINEER'S OFFICE-COURTHOUSE-DENISON, IA.-712-263-2449

## UNITED STATES PUBLIC LAND SURVEY CORNER CERTIFICATE OF

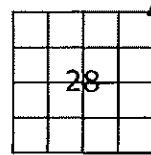
LAND SURVEY MONUMENT SITUATED IN SOLDIER TOWNSHIP, NORTHEAST CORNER OF SECTION 28, T-85N,  
 R-41W OF THE FIFTH P.M. CRAWFORD COUNTY, IOWA.

PREVIOUSLY RECORDED IN SOLDIER TWP. FIELD BOOK PG. 82, COUNTY ENGINEERS OFFICE

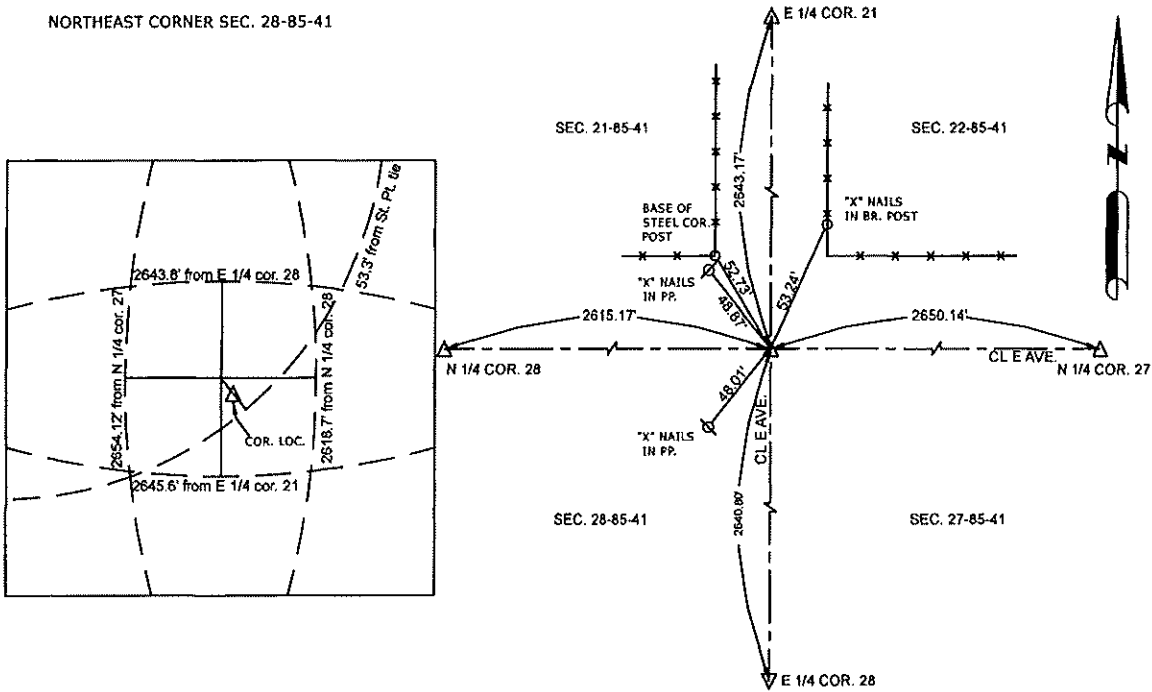
### MONUMENT DESCRIPTION AND REMARKS

NORTHEAST CORNER SEC. 28-85-41

DUG 20' BY 25' HOLE 5' DEEP AND DID NOT FIND CORNER. CORNER WAS ESTABLISHED USING HORIZONTAL DISTANCES FROM  $\frac{1}{4}$  CORNERS TO THE WEST, NORTH, AND SOUTH INDICATED IN THE SOLDIER TWP FIELD BOOK. THE HORIZONTAL DISTNCE FROM THE N $\frac{1}{4}$  COR. 27 WAS OBTAINED BY PROPORTIONING THE SLOPE DISTANCES FROM BOTH THE N $\frac{1}{4}$  COR. 28 AND N $\frac{1}{4}$  COR. 27, ALSO GIVEN IN THE SOLDIER TWP FIELD BOOK. THE CENTER OF THESE DISTANCES WAS THEN SPLIT WITH ONE REMAINING TIE DISTANCE TO A STEEL CORNER POST. SET 5/8" X 18" REBAR WITH RED CAP# 11982 1.0' DEEP AND RETIED.




NORTHEAST CORNER SEC. 28-85-41



ALL TIE DISTANCES ARE MEASURED HORIZONTALLY USING GPS

**CERTIFICATION:**

I HEREBY CERTIFY THAT THIS LAND SURVEYING DOCUMENT WAS PREPARED AND THE RELATED SURVEY WORK WAS PERFORMED BY ME OR UNDER MY DIRECT PERSONAL SUPERVISION AND THAT I AM A DULY LICENSED LAND SURVEYOR UNDER THE LAWS OF THE STATE OF IOWA.

  
 Signature

  
 Date of Survey

PAUL J. ASSMAN  
 Typed Name

11982  
 L.S. No.

12-31-26  
 License Renewal Date

Pages covered by this seal 1

