

COPY

Handwritten initials

Crawford County Recorder
Denise Meeves
Fee Book 2009-1722
06/25/2009 @09:39AM
PLC PLAT CORNER CER
Book: Page: # Pages: 1
Total Fees: \$7.00

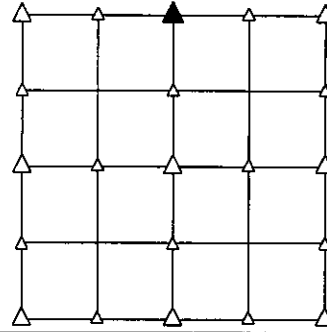
PREPARED BY - TERENCE E. CRAWFORD - SUNDQUIST ENGINEERING - 120 S. MAIN, DENISON, IOWA 51442 - PHONE (712) 263-8118

UNITED STATES PUBLIC LAND SURVEY CORNER CERTIFICATE
OF

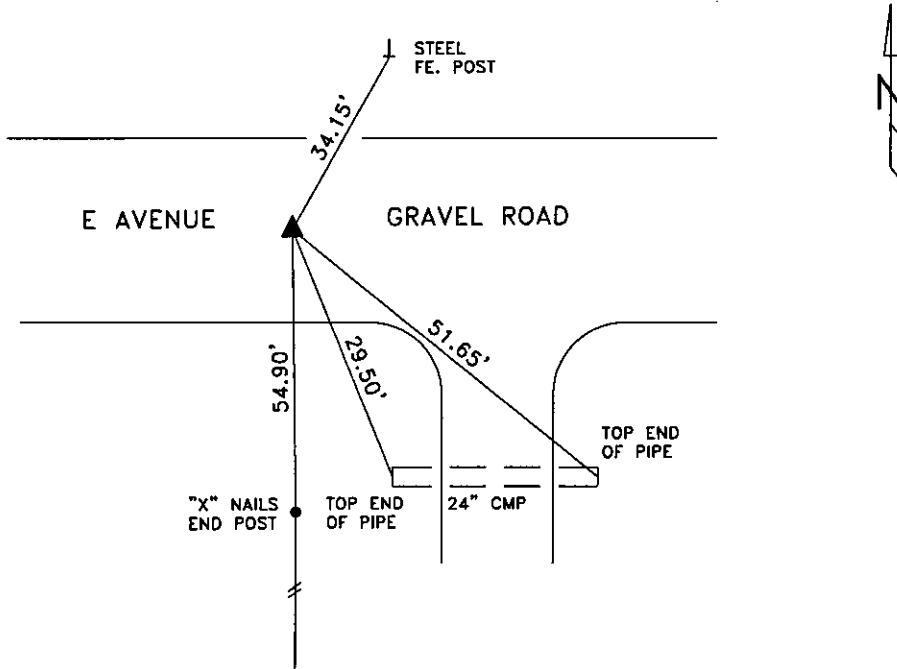
LAND SURVEY MONUMENT SITUATED IN SECTION 29, T 85 N, R 41 W OF
THE 5TH P.M., CRAWFORD COUNTY, IOWA.
PREVIOUSLY RECORDED IN BOOK _____, PAGE _____, OTHER _____

MONUMENT DESCRIPTION AND REMARKS

N1/4 CORNER - FOUND IRON PIN W/YELLOW CAP #14808 DIRECTLY
OVER CM, TOP OF PIN 0.5' DEEP.



PLAN VIEW SHOWING RELATIVE LOCATION OF MONUMENT AND REFERENCE POINTS.

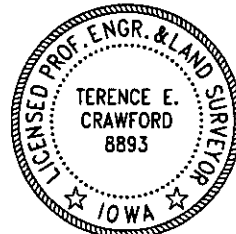


DISTANCES PLUMB CHAINED

N1/4 CORNER SECTION 29-85-41

I HEREBY CERTIFY THAT THIS LAND SURVEYING DOCUMENT WAS PREPARED
AND THE RELATED SURVEY WORK WAS PERFORMED BY ME OR UNDER MY
DIRECT PERSONAL SUPERVISION AND THAT I AM A DULY LICENSED LAND
SURVEYOR UNDER THE LAWS OF THE STATE OF IOWA.

Terence E. Crawford JUN 12 2009
TERENCE E. CRAWFORD DATE
IA LICENSE NO. 8893 EXP. DATE DECEMBER 31, 2009



SE PROJECT NO. 21509
DRAWN BY: LLL