



INDEXED
FOLLOW UP
PROOFED
SCANNED

Crawford Denise Reeves
FEE BOOK 2005-0454 2/28/2005 @ 10:15AM
PLC PLAT CORNER CBRBook: Page:05-0454 #: 1
Total Fees: \$7.00

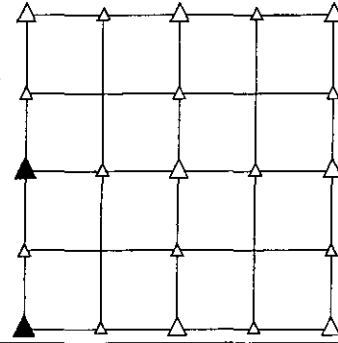
PREPARED BY - TERENCE E. CRAWFORD - SUNDQUIST ENGINEERING - 120 S. MAIN, DENISON, IOWA 51442 - PHONE (712) 263-8118

UNITED STATES PUBLIC LAND SURVEY CORNER CERTIFICATE OF

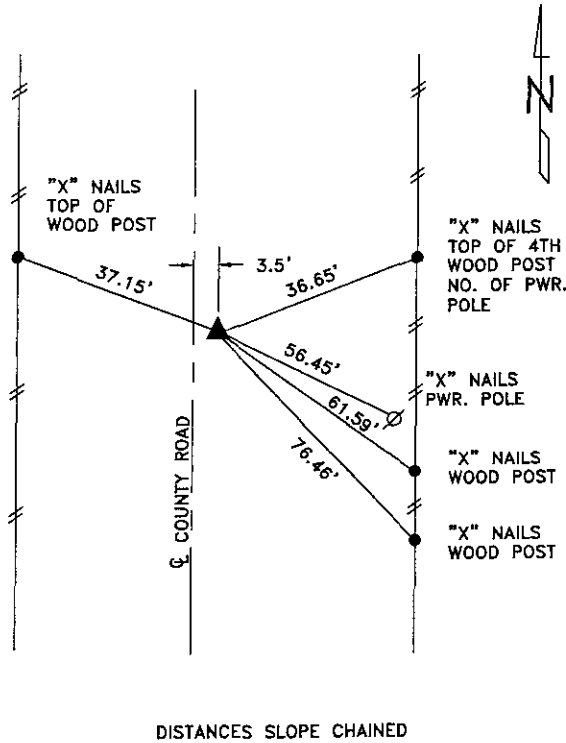
LAND SURVEY MONUMENT SITUATED IN SECTION 21, T 85 N, R 41 W OF
THE 5TH P.M., CRAWFORD COUNTY, IOWA.
PREVIOUSLY RECORDED IN BOOK _____, PAGE _____, OTHER _____

MONUMENT DESCRIPTION AND REMARKS

W1/4 CORNER - FOUND 5/8" DIA. IRON PIN 8" DEEP THAT WAS SET
BY COUNTY OVER CM 4' DEEP.
SW CORNER - FOUND 1" DIA. GAS PIPE 8" DEEP.

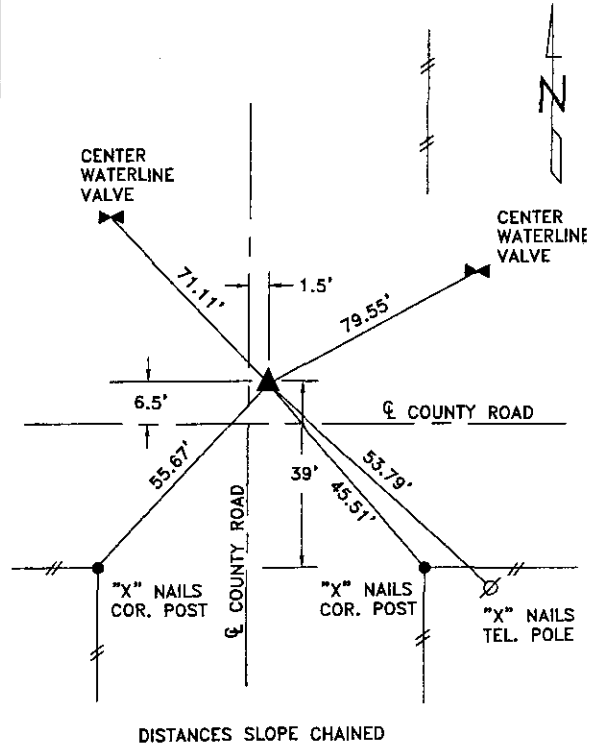


PLAN VIEW SHOWING RELATIVE LOCATION OF MONUMENT AND REFERENCE POINTS.



DISTANCES SLOPE CHAINED

W1/4 CORNER SECTION 21-85-41



DISTANCES SLOPE CHAINED

SW CORNER SECTION 21-85-41

I HEREBY CERTIFY THAT THIS LAND SURVEYING DOCUMENT WAS PREPARED
AND THE RELATED SURVEY WORK WAS PERFORMED BY ME OR UNDER
MY DIRECT SUPERVISION AND THAT I AM A DULY LICENSED LAND
SURVEYOR UNDER THE LAWS OF THE STATE OF IOWA.

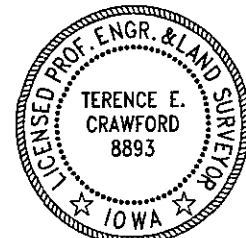
Terence E. Crawford
TERENCE E. CRAWFORD

IA LICENSE NO. 8893

FEB 22 2005

DATE

EXP. DATE DECEMBER 31, 2005



SE PROJECT NO. 20405
DRAWN BY: LLL