

UNITED STATES PUBLIC LAND SURVEY CORNER CERTIFICATE

OF

Land Survey Monuments situated in Section 31, Township 85N., Range 41W., of the Fifth Principal Meridian, CRAWFORD County, Iowa. Previously recorded in NO PREVIOUS DOCUMENT RECORDED. in County Recorder's Office. (book, page, document number, etc.)

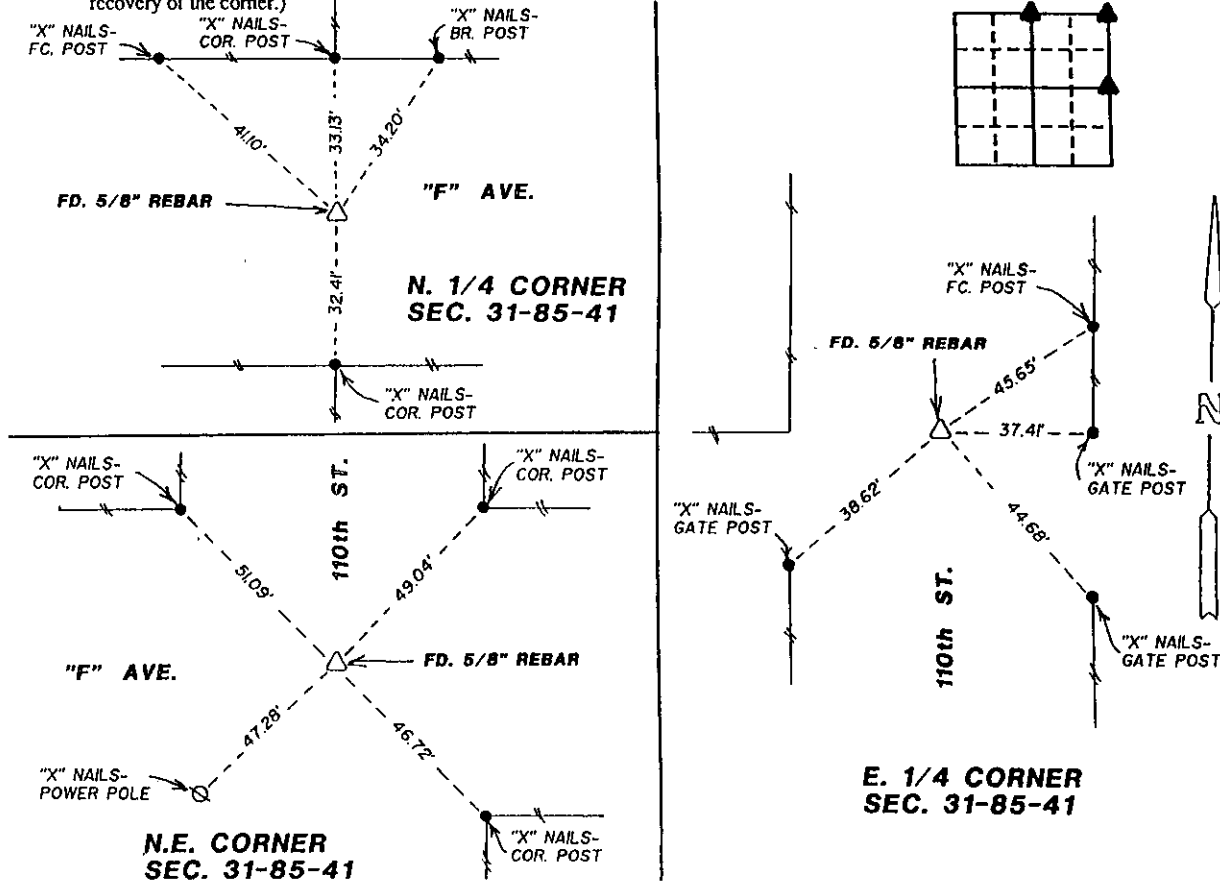
(Show reason for preparing this certificate, the evidence and detailed procedures used in establishing the corner positions and monumentation found or placed.)

Monument Description and Remarks: MONUMENTS FOUND ARE SHOWN ON PLAT OF SURVEY

BY H. GENE McKEOWN AND ASSOCIATES INC. - DATED APRIL 9, 1986.

PLAN - VIEW

(Show a minimum of three reference ties to durable physical objects, relevant monuments and physical conditions that will enable recovery of the corner.)

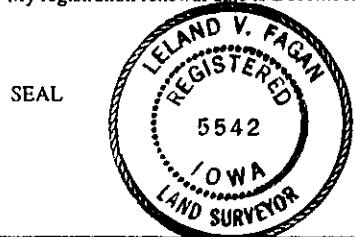


I hereby certify that the survey work was completed and this land surveying document was prepared by me or under my direct personal supervision and that I am a duly registered land surveyor under the laws of the state of Iowa.

Signature: [Signature]  
Name typed or printed: LELAND V. FAGAN

Date: APRIL 3, 1995 Reg. No. 5542

My registration renewal date is December 31, 1995



Corners	List Corners to be Indexed		
	Section	Twp	Range
N.E. COR.	31	85	41
N. 1/4 COR.	31	85	41
E. 1/4 COR.	31	85	41

FILED DENISON, IOWA  
CRAWFORD COUNTY  
95 APR -6 AM 9:48  
INST. NO. 95-0814  
DENISE MEEVES, RECORDER  
Denise Meeves  
FEE \$6.00

INDEXED  
FOLLOW UP  
PROOFED  
[Signature]