

This document prepared by : Semke & Associates - 712-792-2276
 Micheal G. Semke, L.S. #10318 - 716 N. Crawford St. - Carroll, Iowa

UNITED STATES PUBLIC LAND SURVEY CORNER CERTIFICATE
 OF

Land Survey Monuments situated in Section 27, Township 85 North, Range 41
 West, of the Fifth Principal Meridian, Crawford County, Iowa.
 Previously recorded in Book , Page in County Recorder's Office.

(Show reason for preparing this certificate, the evidence and detailed procedures used in establishing the corner positions and monumentation found or placed.)

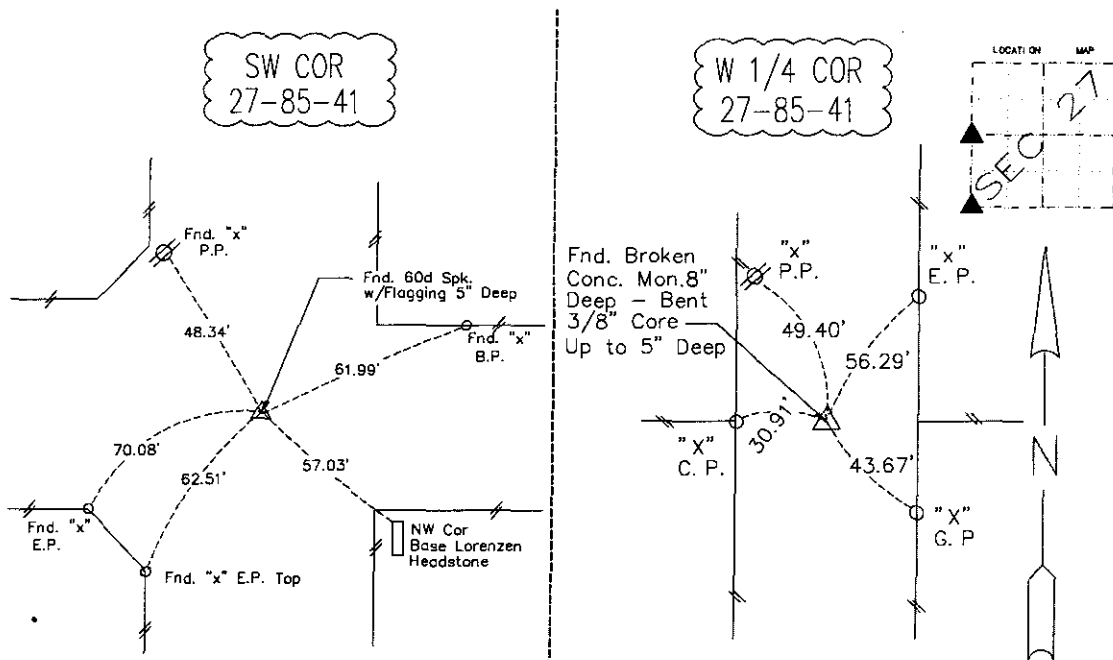
W 1/4 Corner Fnd. Broken C.M. 8" Deep
 Straightened 3/8" Core Wire up -
 Top is 5" Deep

SW Corner Fnd. 60d Spk. w/Flagging @
 Record Ties 5" Deep

Note: All pins set are 1/2" x 24" Rerod w/Yellow Cap #10318 unless noted otherwise.

PLAN - VIEW

(Show a minimum of three reference ties to durable physical objects, relevant monuments and physical conditions that will enable recovery of the corner.)



Note: all ties slope chained unless noted otherwise.

	I HEREBY CERTIFY THAT THIS LAND SURVEYING DOCUMENT AND RELATED SURVEY WORK WAS PERFORMED BY ME OR UNDER MY DIRECT PERSONAL SUPERVISION AND THAT I AM A DULY LICENSED LAND SURVEYOR UNDER THE LAWS OF THE STATE OF IOWA.		
	<i>Micheal G. Semke</i> Signature	6/14/04 Date	
	Micheal G. Semke, L.S. No. 10318 Printed of Typed Name		
	Pages of sheets covered by this seal THIS PAGE My license is subject to renewal 12/31/05.		
List Corners to be Indexed			
Corners	Section	Twp	Range
W 1/4 Cor	27	85	41
E 1/4 Cor	28	85	41
SW Cor	27	85	41
NW Cor	34	85	41
NE Cor	33	85	41
SE Cor	28	85	41