

Prepared by: Nathan H. Carlson Address: 3701 12th Street N, Suite 206 Phone: 320-253-9495  
*St. Cloud, MN 56303*

**UNITED STATES PUBLIC LAND SURVEY CORNER CERTIFICATE FOR**

Land survey monuments situated in Section 35, Township 85 N  
Range 41 W, of the Fifth Principal Meridian, Crawford County, Iowa.

Previously recorded in \_\_\_\_\_ in County Recorder's Office.

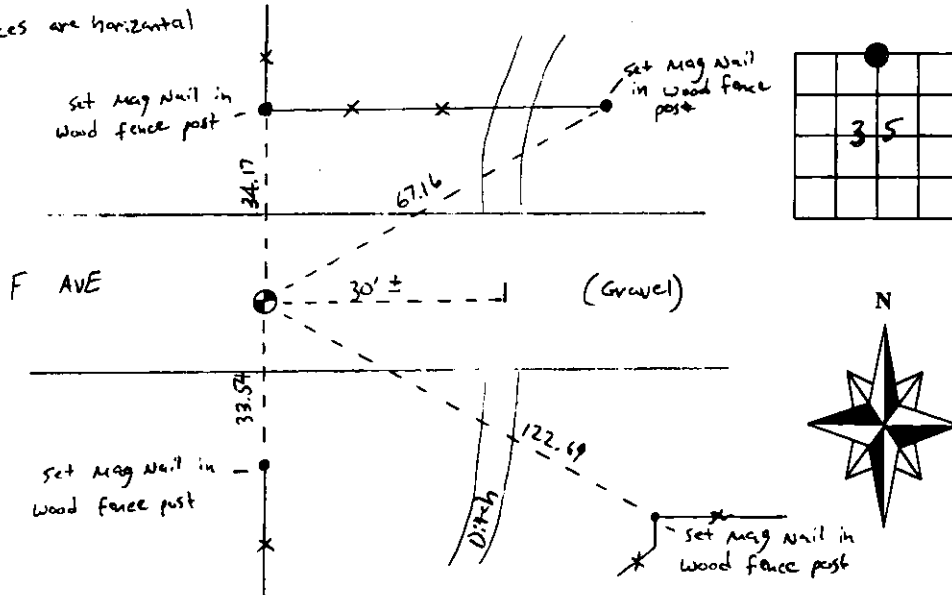
(Show reason for preparing this certificate, the evidence and detailed procedures used in establishing the corner positions & monumentation found or placed.)

MONUMENT DESCRIPTION AND REMARKS: Found 1/2" rebar in gravel road 0.5 ft  
deep. The monument fits a N/S fence line & 2 old ties were  
verified from hwy dept. fieldbook dated 8/15/41. New ties were  
established.

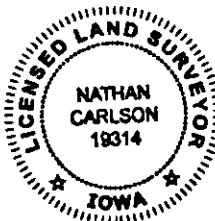
**PLAN - VIEW**

(Show a minimum of three reference ties to durable physical objects, relevant monuments and physical conditions that will enable recovery of the corner.)

All distances are horizontal



SEAL



SL-SI-3/98

I hereby certify that this land surveying document was prepared and the related survey work was performed by me or under my direct personal supervision and that I am a duly licensed Land Surveyor under the laws of the State of Iowa.

Nathan H. Carlson 1/4/2012  
Signature Date

Typed/Printed Name: Nathan H. Carlson

License Number: 19314

My license renewal date is December 31, 2012

Pages or sheets covered by this seal: This sheet

Corners to be Indexed

Corners	Section	Twp.	Range
N 1/4	35	85 N	41 W