

INDEXED DM/DM
 FOLLOW UP KM
 PROOFED _____
 SCANNED DM

Instrument #: 2016-1591
 07/28/2016 11:11:06 AM Total Pages: 1
 PLC PLAT CORNER CER
 Recording Fee: \$0.00 Transfer Tax: \$0
 Denise Meeves, Recorder, Crawford County Iowa



PREPARED BY: PAUL ASSMAN-CRAWFORD COUNTY ENGINEER'S OFFICE-COURTHOUSE-DENISON, IA.-712-263-2449

UNITED STATES PUBLIC LAND SURVEY CORNER CERTIFICATE OF

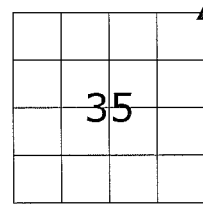
LAND SURVEY MONUMENT SITUATED IN SOLDIER TOWNSHIP, THE NORTHEAST CORNER OF SECTION 35, T-85N,
R-41W OF THE FIFTH P.M. CRAWFORD COUNTY, IOWA.

PREVIOUSLY RECORDED AS NO. 97-2685

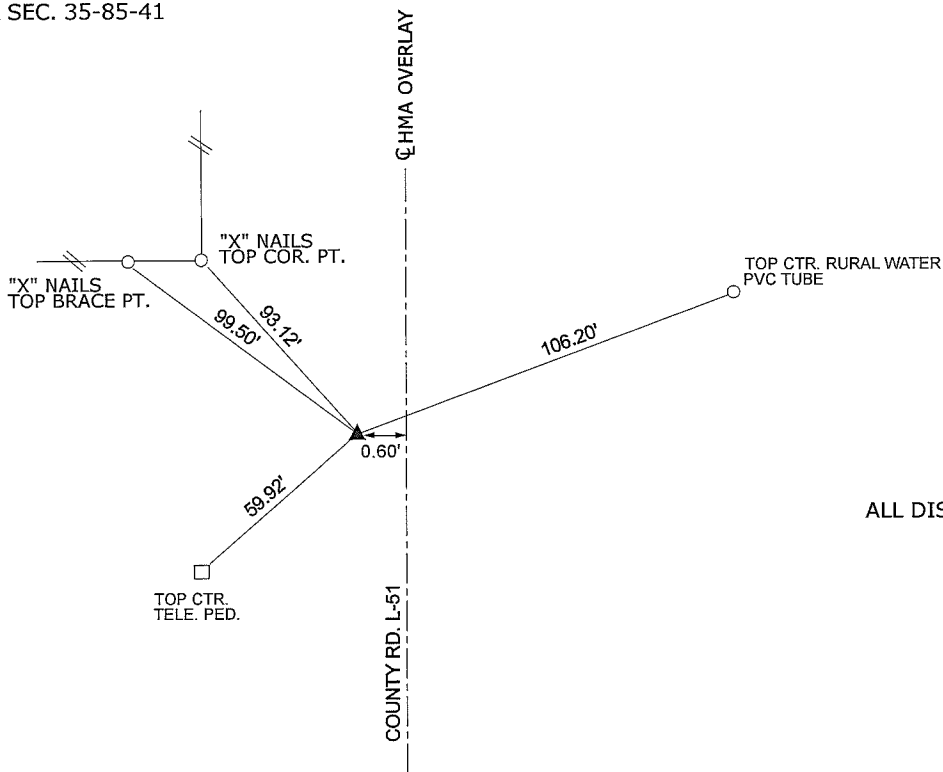
MONUMENT DESCRIPTION AND REMARKS

NORTHEAST CORNER SEC. 35-85-41

FOUND BOLT FLUSH WITH ASPHALT USING PREVIOUS TIES. COMPLETED HMA OVERLAY, RESET AND RETIED CORNER - SET CARRIAGE BOLT 0.05' DEEP



NORTHEAST CORNER SEC. 35-85-41



ALL DISTANCES ARE PLUMB CHAINED

CERTIFICATION:

I HEREBY CERTIFY THAT THIS LAND SURVEYING DOCUMENT WAS PREPARED AND THE RELATED SURVEY WORK WAS PERFORMED BY ME OR UNDER MY DIRECT PERSONAL SUPERVISION AND THAT I AM A DULY LICENSED LAND SURVEYOR UNDER THE LAWS OF THE STATE OF IOWA.

<u>Paul J. Assman</u> Signature	<u>7/27/16</u> Date of Survey
PAUL J. ASSMAN Typed Name	11982 L.S. No.
	12-31-16 License Renewal Date

Pages covered by this seal 1

