

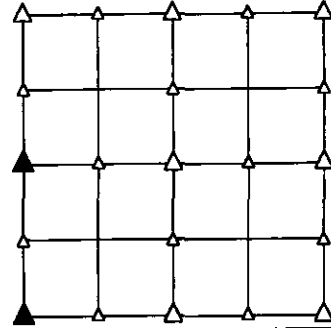
PREPARED BY - TERENCE E. CRAWFORD - SUNDQUIST ENGINEERING - 120 S. MAIN, DENISON, IOWA 51442 - PHONE (712) 283-8118

**UNITED STATES PUBLIC LAND SURVEY CORNER CERTIFICATE  
 OF**

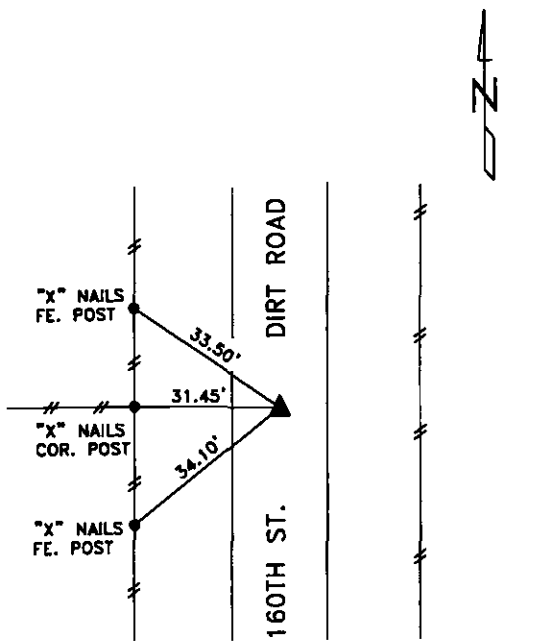
LAND SURVEY MONUMENT SITUATED IN SECTION 31, T 85 N, R 40 W OF  
 THE 5TH P.M., CRAWFORD COUNTY, IOWA.  
 PREVIOUSLY RECORDED IN BOOK \_\_\_\_\_, PAGE \_\_\_\_\_, OTHER \_\_\_\_\_

**MONUMENT DESCRIPTION AND REMARKS**

W1/4 CORNER - SET 5/8" DIA. X 18" IRON PIN W/YELLOW CAP  
 #8893 0.4' DEEP, SET ON LINE BETWEEN NW COR.  
 & SW COR. OF SEC. 31 & ON LINE W/OLD FENCE  
 WEST.  
 SW CORNER - FOUND 5/8" DIA. IRON PIN 0.3' DEEP.

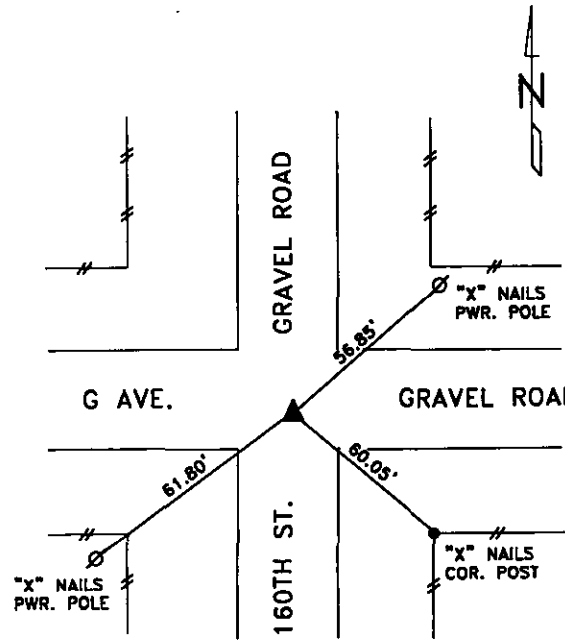


**PLAN VIEW SHOWING RELATIVE LOCATION OF MONUMENT AND REFERENCE POINTS.**



DISTANCES PLUMB CHAINED

W1/4 CORNER SECTION 31-85-40



DISTANCES PLUMB CHAINED

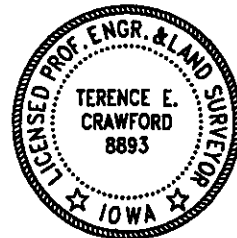
SW CORNER SECTION 31-85-40

I HEREBY CERTIFY THAT THIS LAND SURVEYING DOCUMENT WAS PREPARED  
 AND THE RELATED SURVEY WORK WAS PERFORMED BY ME OR UNDER MY  
 DIRECT PERSONAL SUPERVISION AND THAT I AM A DULY LICENSED LAND  
 SURVEYOR UNDER THE LAWS OF THE STATE OF IOWA.

*Terence E. Crawford 10-11-11*  
 TERENCE E. CRAWFORD DATE

IA LICENSE NO. 8893

EXP. DATE DECEMBER 31, 2011



SE PROJECT NO. 24211  
 DRAWN BY: LLL