

2001 APR -3 PM 3:22

INST. NO. 2001-0791  
DENISE NEEVES, RECORDER

*Denise Neeves*  
FEE #6 *Manya Giten Deputy*

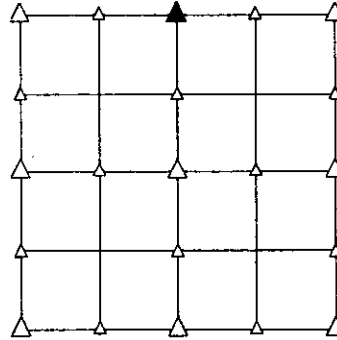
PREPARED BY - TERENCE E. CRAWFORD - SUNDOQUIST ENGINEERING - 120 S. MAIN, DENISON, IOWA 51442 - PHONE (712)263-8118

### UNITED STATES PUBLIC LAND SURVEY CORNER CERTIFICATE OF

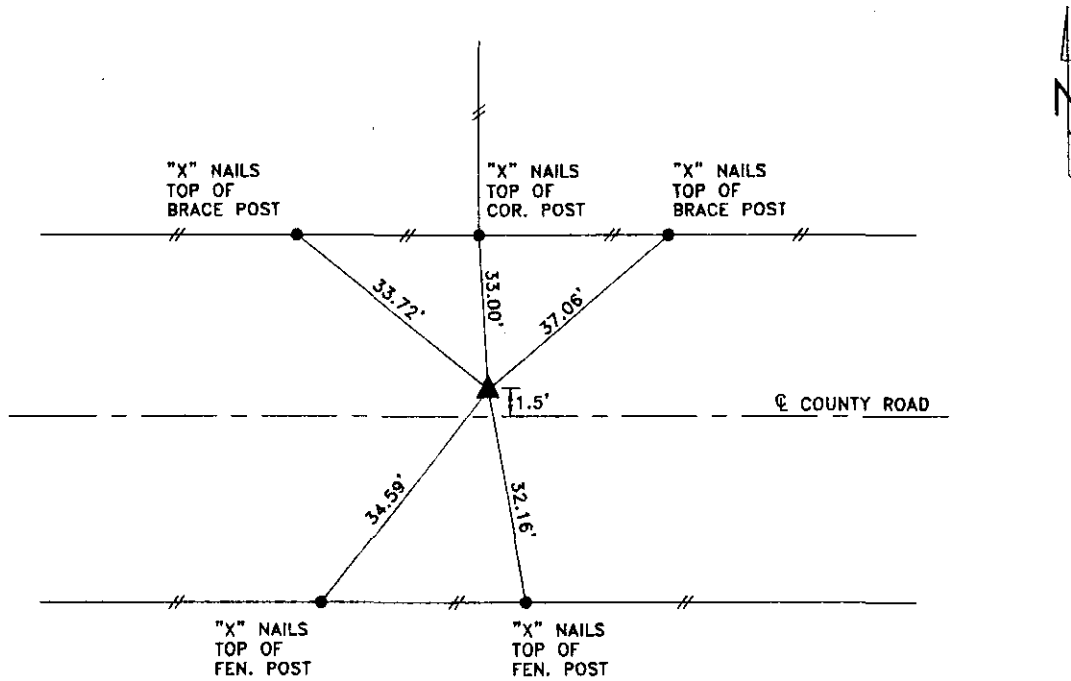
LAND SURVEY MONUMENT SITUATED IN SECTION 36, T. 85 N, R. 41 W OF  
THE 5TH P.M., CRAWFORD COUNTY, IOWA.  
PREVIOUSLY RECORDED IN BOOK \_\_\_\_\_, PAGE \_\_\_\_\_, OTHER \_\_\_\_\_

#### MONUMENT DESCRIPTION AND REMARKS

N1/4 CORNER - FOUND CONCRETE MONUMENT WITH OAK STAKE  
2.53' DEEP. RAISED WITH 5/8" DIA. X 8" IRON  
PIN AND ANOTHER 5/8" DIA. X 18" IRON PIN  
W/YELLOW CAP #8893, 0.33' DEEP.



#### PLAN VIEW SHOWING RELATIVE LOCATION OF MONUMENT AND REFERENCE POINTS.



DISTANCES PLUMB CHAINED

N1/4 CORNER SECTION 36-85-41

I HEREBY CERTIFY THAT THIS LAND SURVEYING DOCUMENT WAS PREPARED  
AND THE RELATED SURVEY WORK WAS PERFORMED BY ME OR UNDER  
MY DIRECT SUPERVISION AND THAT I AM A DULY LICENSED LAND  
SURVEYOR UNDER THE LAWS OF THE STATE OF IOWA.

*Terence E. Crawford*

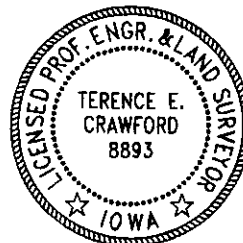
MAR 14 2001

TERENCE E. CRAWFORD

DATE

IA LICENSE NO. 8893

EXP. DATE DECEMBER 31, 2001



SE PROJECT NO. 21301  
DRAWN BY: LMD