



INDEXED  
FOLLOW UP  
PROOFED  
SCANNED

Crawford County Recorder Denise Meeves  
FEE BOOK 2006-0961 4/07/2006 @ 12:11PM  
PLC PLAT CORNER CERBook: Page: #: 1  
Total Fees: \$7.00

WILKE LAND SURVEYING 401 1800th Street Panama, Iowa 51562 (712)489-2898

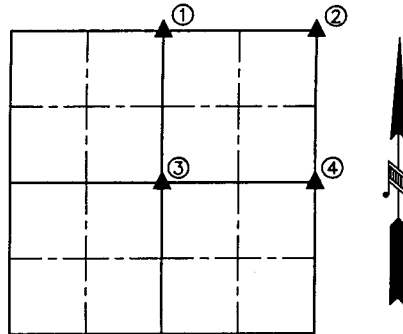
UNITED STATES PUBLIC LAND SURVEY CORNER CERTIFICATE

SECTION 5 TOWNSHIP 85N RANGE 41W COUNTY CRAWFORD

Certificate Prepared For: Survey of Part of the NE1/4 of Section 5

Monument Description and Remarks:

- ① Found 1/2" dia. pipe w/crimped top - 1.2' deep in road and in line with fence South. Probed 5' under and no conc. was found. The ties from the Crawford County Engineer's Office were the same as from the Ida County Engineer's Office and they wouldn't fit the found pipe or each other when crossing them in the field.
- ② Found conc. mon. without disc - 1.1' deep in road. No metal detection and no ties were left so did a lot of digging until found. Set P.K. nail in top center of conc. mon. Set 5/8" rebars on North and South sides just below the top of the C.M. for detection purposes only.
- ③ Set 5/8" x 24" rebar w/orange cap PLS #17048 - Flush - at the intersection point of lines from opposite 1/4 Corners of Section 5.
- ④ Set (Witness Pin) 5/8" x 24" rebar w/orange cap PLS #17048 - Flush - 75.00' Westerly of the Calculated E1/4 Corner on the South line of the NE1/4. The E1/4 Corner was calculated by single proportion between the SE Corner and NE Corner of Section 5. It lined up good with the fallen fences extending West and North of the deep creek. The fence extending South of the creek was +/- 7.8' West of the Section line.



LICENSED LAND SURVEYOR

DEAN A. WILKE

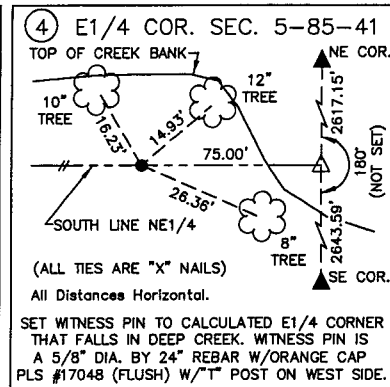
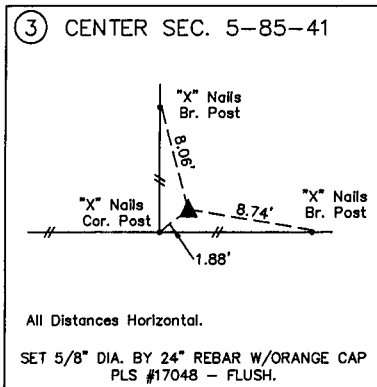
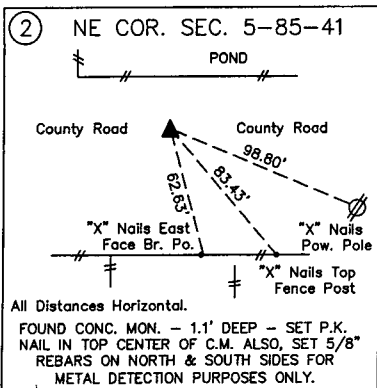
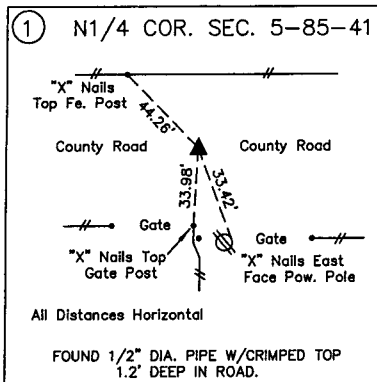
17048

IOWA

I hereby certify that this land surveying document was prepared and the related survey work was performed by me or under my direct personal supervision and that I am a duly licensed Land Surveyor under the laws of the State of Iowa.

*Dean A. Wilke* 4/07/06  
Dean A. Wilke Date

License number 17048  
My license renewal date is December 31, 2007  
Pages or sheets covered by this seal: This page only



List Corners to be Indexed			
Corner	Section	Twp.	Range
N1/4 CORNER	5	85N	41W
NE CORNER	5	85N	41W
CENTER	5	85N	41W
(WITNESS PIN TO) E1/4 CORNER	5	85N	41W