

FILED DENISON, IOWA
CRAWFORD COUNTY

INDEXED _____
FOLLOW UP Done
PROCEED _____

2003 NOV 17 AM 11:54
2003-4351
DENISE MEYER, RECORDER
Denise Meyer
FEE \$ 11.00

PREPARED BY ROBERT L. HOLZE MID-WEST LAND SURVEYORS, INC., P.O. BOX 1352, MASON CITY, IOWA 50402-1352, (641)-423-1451

UNITED STATES PUBLIC LAND SURVEY CORNER CERTIFICATE OF

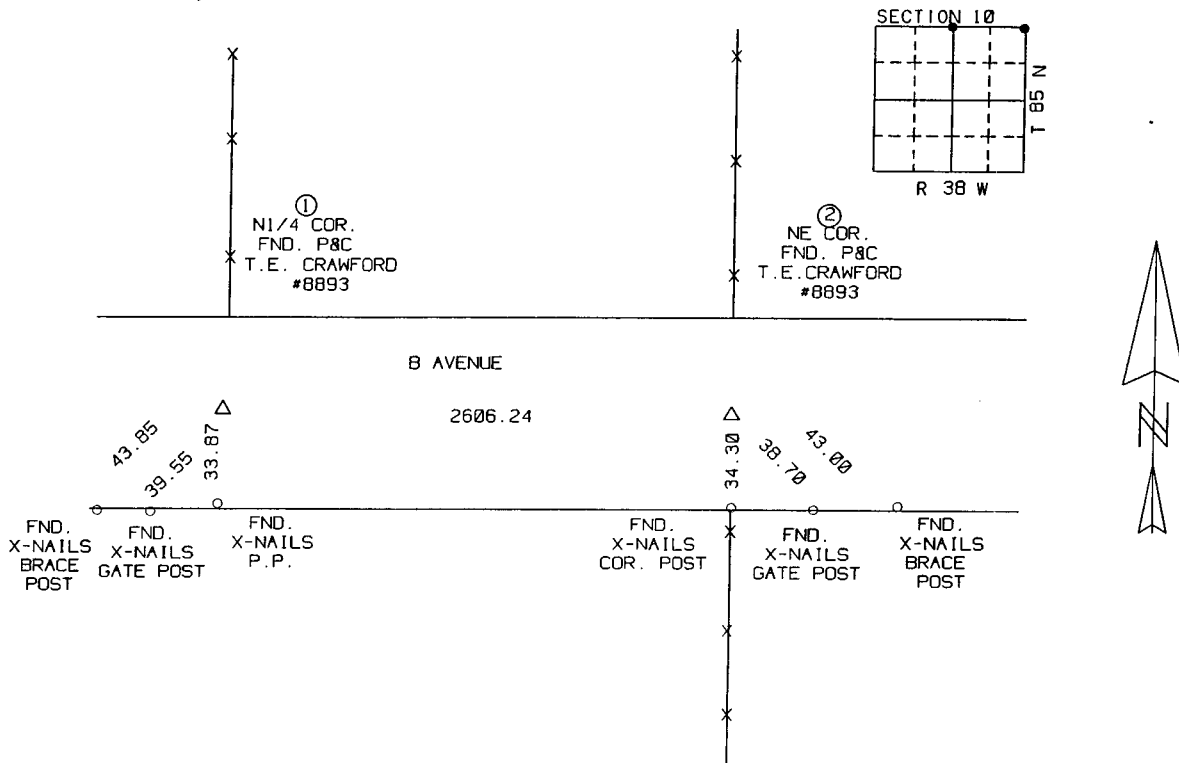
Land Survey Monuments situated in Section 10, Township 85N, Range 38W, of the Fifth Principal Meridian, CRAWFORD County, Iowa
Previously recorded in _____ in County Recorder's Office.
(book, page, document, number, etc.)

(Show reason for preparing this certificate, the evidence and detailed procedures used in establishing the corner positions and monumentation found or placed.)
Monument Description and Remarks: _____

- ① N1/4 CORNER FOUND P&C T.E. CRAWFORD #8893
- ② NORTHEAST CORNER FOUND P&C T.E. CRAWFORD #8893

PLAN-VIEW

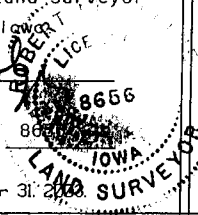
(Show a minimum of three reference ties to durable physical objects, relevant monuments and physical conditions that will enable recovery of corner.)



I hereby certify that the survey work was completed and this certificate was prepared by me or under my direct personal supervision and that I am a duly Licensed Land Surveyor under the laws of the State of Iowa.

Signature: Robert L. Holze
Robert L. Holze
Date: 10/16/2003 Reg. No. 8656

My registration renewal date is December 31, 2008



List of Corners to be Indexed

Corners	Section	Twp.	Range
① N1/4 COR.	10	85N	38W
② NE COR.	10	85N	38W