


PREPARED BY DAW
 PROOFED DAW
 SCANNED DAW

□ □ 
 Crawford County Recorder Denise Meeves
 Fee Book 2007-0791 REC013911
 03/28/2007 @0805AM # Pages 1
 PLC PLAT CORNER CER
 Total Fees: \$7.00

WILKE LAND SURVEYING 401 1800th Street Panama, Iowa 51562 (712)489-2898

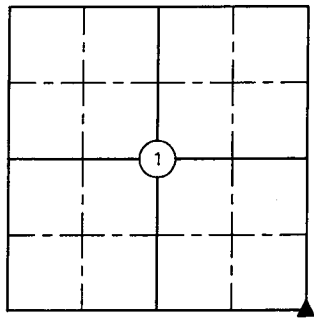
UNITED STATES PUBLIC LAND SURVEY CORNER CERTIFICATE


SECTION 1 TOWNSHIP 85N RANGE 38W COUNTY CRAWFORD

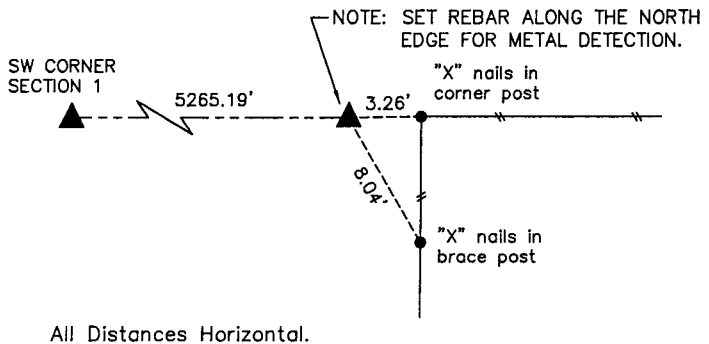
Certificate Prepared For: Survey of Lot 1 of the S1/2 SE1/4

Monument Description and Remarks:

Found concrete monument with the top broken off and missing (1.0' deep) using reference information from the County Engineer's Office.



	<p>I hereby certify that this land surveying document was prepared and the related survey work was performed by me or under my direct personal supervision and that I am a duly licensed Land Surveyor under the laws of the State of Iowa.</p>
	<p><u>Dean A. Wilke</u> <u>3/27/07</u> Dean A. Wilke Date</p>
	<p>License number 17048 My license renewal date is December 31, 2007</p>
	<p>Pages or sheets covered by this seal: <u>This page only</u></p>



FOUND CONCRETE MONUMENT WITH THE TOP BROKEN OFF AND MISSING (1.0' DEEP).

List Corners to be Indexed			
Corner	Section	Twp.	Range
SE Corner	1	85N	38W