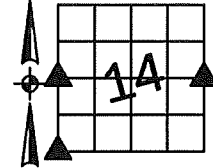


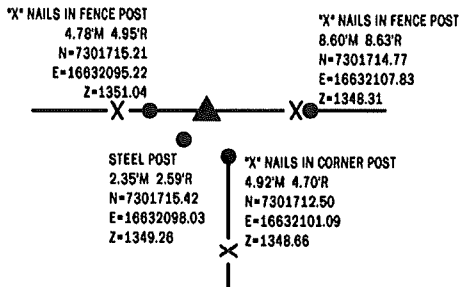
Sara Meseck, RECORDER
 Crawford County, Iowa
 Instr. Number: 2023-0815
 Recorded: 5/2/2023 at 8:46:22.0 AM
 Pages 1
 County Recording Fee: \$7.00
 Iowa E-Filing Fee: \$3.13
 Combined Fee: \$10.13
 Revenue Tax:

PREPARED BY AND RETURN TO: MIKE SCHULTE, SCHULTE SURVEYING, INC., 2003 390TH STREET, WESTSIDE, IA 51467 (712) 790-3489

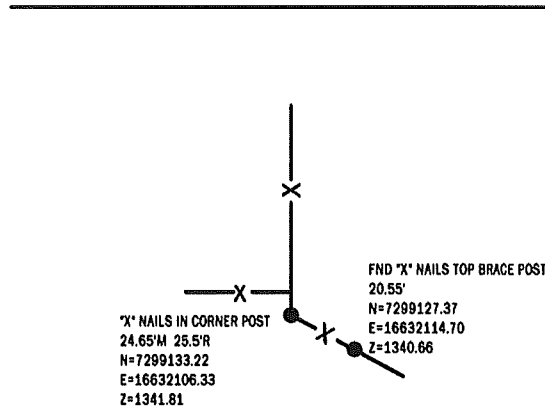
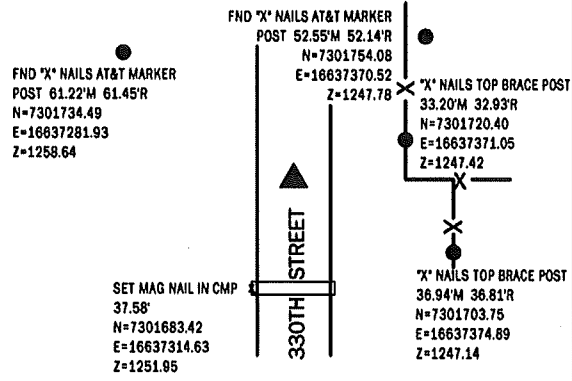
UNITED STATES PUBLIC LAND SURVEY CORNER CERTIFICATE OF
 LAND SURVEY MONUMENTS SITUATED IN SECTION 14, TOWNSHIP 85 NORTH, RANGE 38 WEST, OF THE FIFTH
 PRINCIPAL MERIDIAN, CRAWFORD COUNTY, IOWA. PREVIOUSLY RECORDED IN SEE BELOW IN COUNTY
 RECORDER'S OFFICE. (book, page instrument number)



W1/4 CORNER
 FND CONCRETE MONUMENT 4" DEEP
 N=7301717.19 E=16632099.57 Z=1347.45
 USED CERTIFICATE RECORDED IN INSTRUMENT #99-3326 TO FIND A CONCRETE MONUMENT 4" DEEP.
 VERIFIED WITH 4 REMAINING TIES.
 THIS CERTIFICATE IS BEING FILED TO UPDATE THE REFERENCE TIES.



E1/4 CORNER
 FND 5/8" REBAR 6" DEEP
 N=7301712.10 E=16637338.91 Z=1250.59
 USED COUNTY ENGINEER'S TIES AND A METAL LOCATOR TO FIND
 A 5/8" REBAR 6" DEEP. VERIFIED WITH 4 REMAINING TIES.
 THIS CERTIFICATE IS BEING FILED DUE TO NONE OF RECORD.



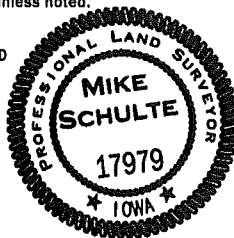
SW CORNER
 FND CONCRETE MONUMENT 4" DEEP
 N=7299108.57 E=16632106.40 Z=1333.81
 USED COUNTY ENGINEER'S TIES TO FIND A CONCRETE
 MONUMENT 4" DEEP. VERIFIED WITH 1 REMAINING TIE. PLACED A
 LEANING 5/8" REBAR OVER FOR SEARCHING PURPOSES ONLY.
 THIS CERTIFICATE IS BEING FILED DUE TO NONE OF RECORD.

SET *X* NAILS IN 10" DIA. TREE
 3.93'
 N=7299111.01
 E=16632103.32
 Z=1336.21

*All distances are measured horizontally unless noted.

I HEREBY CERTIFY THAT THIS LAND SURVEYING DOCUMENT WAS
 PREPARED BY ME OR UNDER MY DIRECT PERSONAL SUPERVISION AND
 THAT I AM A DULY LICENSED PROFESSIONAL LAND SURVEYOR UNDER
 THE LAWS OF THE STATE OF IOWA.

Mike Schulte
 MIKE SCHULTE
 LICENSE NUMBER: 17979
 LICENSE RENEWAL DATE IS DECEMBER 31, 2023
 PAGES COVERED BY THIS SEAL: 1 OF 1



LIST CORNERS TO BE INDEXED

CORNER	SECTION	TWP	RANGE
W1/4 CORNER	14	85	38
E1/4 CORNER	15	85	38
E1/4 CORNER	14	85	38
W1/4 CORNER	13	85	38
SW CORNER	14	85	38
SE CORNER	15	85	38
NE CORNER	22	85	38
NW CORNER	23	85	38

BASIS OF BEARING
 IARCS ZONE 8 - US SURVEY FEET
 IGRN DERIVED - NAD83(2011)(EPOCH 2010.00)

SCHULTE SURVEYING, INC.

DRAWN BY: MLS/SLG
 PROJ NUMBER: 23-020