

1999 DE 13 AM 11:43

99-3326
INST. NO.
DENISE MEEVES, RECORDER
Denise Meeves
FEE #6.00
Mary Eiten, Deputy

WARDER C. HILLHOUSE, JR. M.H.F. ENGINEERING P.C. 300 W. MCKINLEY JEFFERSON, IA. (515)386-4101

UNITED STATES PUBLIC LAND SURVEY CORNER CERTIFICATE OF

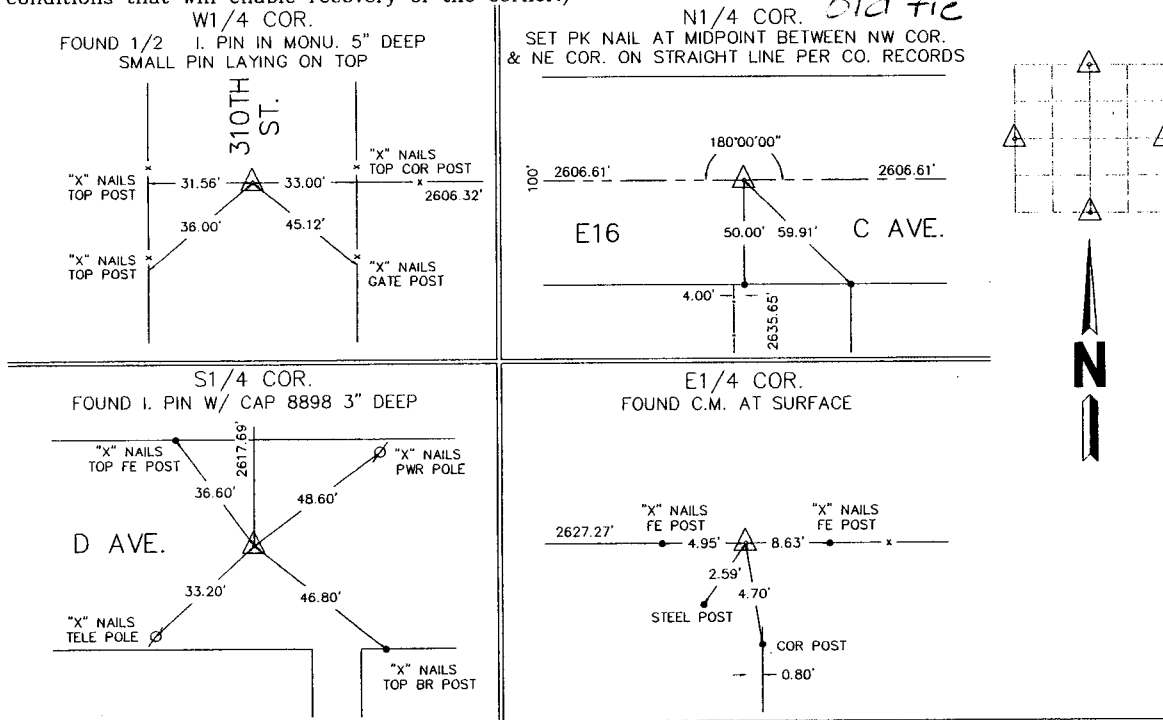
Land Survey Monuments in Section 15, Township 85, Range 38, of the Fifth Principal Meridian, CRAWFORD County, Iowa.
Previously recorded in _____ in County Recorder's Office.
(book, page, document number, etc.)

(Show reason for preparing this certificate, the evidence and detailed procedures used in establishing the corner positions and monumentation found or placed.)

Monument Description and Remarks: _____

PLAN - VIEW

(Show a minimum of three reference ties to durable physical objects, relevant monuments and physical conditions that will enable recovery of the corner.)



I hereby certify that land surveying document and the related survey work was performed by me or under my direct personal supervision and that I am a duly licensed land surveyor under the laws of the state of Iowa.

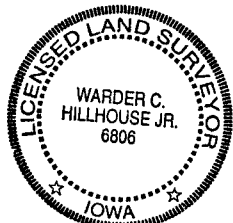
Signature: Warder C. Hillhouse, Jr.
Name typed or printed: Warder C. Hillhouse, Jr.

Date: 12/8/99 Lic. No. 6806

License Renewal Dec. 31, 1999

Date Surveyed: 11/99

Seal



List Corners to be Indexed

Corners	Section	Twp	Range
N1/4 COR	15	85	38
E1/4 COR	15	85	38
S1/4 COR	15	85	38
W1/4 COR	15	85	38

File No. 99208-1



M.H.F. ENGINEERING, P.C.
ENGINEERS - LAND SURVEYORS
Jefferson, Iowa 50129 Ph. (515)386-4101