

UNITED STATES PUBLIC LAND SURVEY CORNER CERTIFICATE

OF

Land Survey Monuments situated in Section 20, Township 85, Range 38, of the Fifth Principal Meridian, Crawford County, Iowa.
Previously recorded in does not apply in County Recorder's Office.

(Show reason for preparing this certificate, the evidence and detailed procedures used in establishing the corner positions and monumentation found or placed.)
Monument Description and Remarks: as described below

PLAN - VIEW

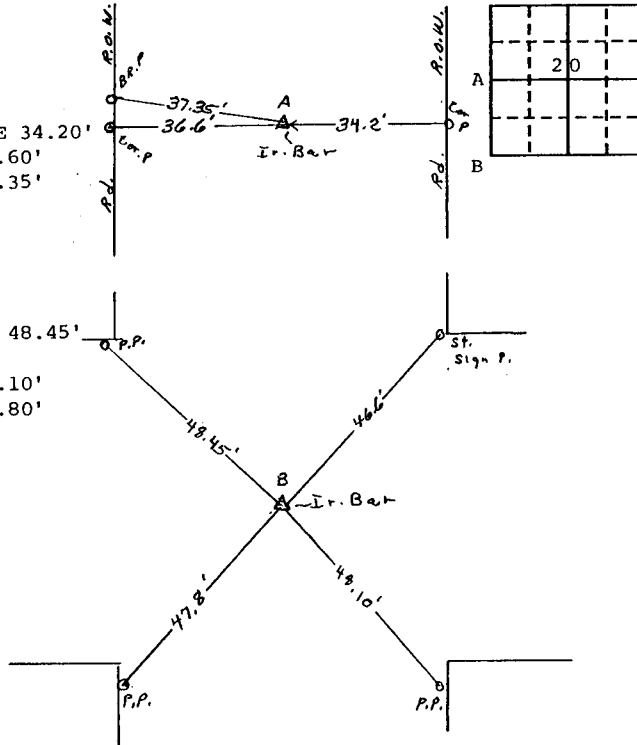
(Show a minimum of three reference ties to durable physical objects, relevant monuments and physical conditions that will enable recovery of the corner.)

- A. 5/8" diameter iron bar
3" deep @ W $\frac{1}{4}$ corner

x-nails in top of cor post E 34.20'
x-nails in cor post west 36.60'
x-nails in brace post NW 37.35'

- B. 5/8" diameter iron bar
3" deep @ SW corner

R.R. spike in power pole NW 48.45'
street sign post NE 46.40'
x-nails in power pole SE 48.10'
x-nails in power pole SW 47.80'



FILED DENISON, IOWA
CRAWFORD COUNTY

95 FEB 17 AM 10:31

INST. NO. 95-0358
DENISE MEEVES, RECORDER
Denise Meeves
FEB 17 1995

INDEXED ME
FOLLOW UP DM
PROOFED ✓

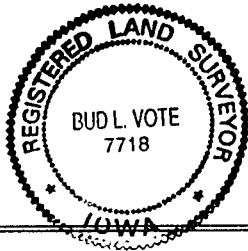
I hereby certify that the survey work was completed and this land surveying document was prepared by me or under my direct personal supervision and that I am a duly registered land surveyor under the laws of the state of Iowa

Signature: Bud L. Vote
Name typed or printed: Bud L. Vote

Date: Feb. 8, 1995 Reg. No. 7718

My registration renewal date is December 31, 1996

SEAL



Corners	List Corners to be Indexed		
	Section	Twp	Range
W $\frac{1}{4}$	20	85	38
SW	"	"	"