

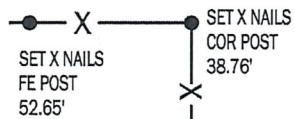
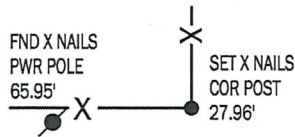
PREPARED BY AND RETURN TO: MIKE SCHULTE, SCHULTE SURVEYING, INC., 2003 390TH STREET, WESTSIDE, IA 51467 (712) 790-3489

**UNITED STATES PUBLIC LAND SURVEY CORNER CERTIFICATE OF**

LAND SURVEY MONUMENTS SITUATED IN SECTION 21, TOWNSHIP 85 NORTH, RANGE 38 WEST, OF THE FIFTH PRINCIPAL MERIDIAN, CRAWFORD COUNTY, IOWA. PREVIOUSLY RECORDED IN SEE BELOW IN COUNTY RECORDER'S OFFICE.  
(book, page instrument number)

**N1/4 CORNER**

FND 1" BOLT/ROD 4" DEEP  
 NORTHING EASTING ELEV  
 7299071.42 16624234.23 1283.3

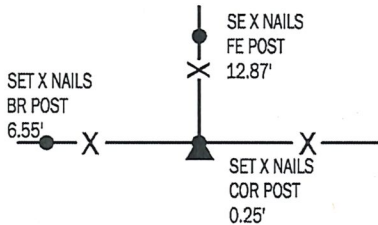


COUNTY ENGINEER'S TIES INDICATE A 1" BOLT SET FROM TIES IN 2000. FOUND 1" BOLT/ROD 4" DEEP. VERIFIED WITH REMAINING TIES AND ACCEPTED CORNER. TIED OUT CORNER SINCE SOME OF THE PREVIOUS TIES ARE NOW MISSING.

**CENTER SECTION**

SET 5/8" REBAR WITH YPC 17979

NORTHING EASTING ELEV  
 7296431.90 16624261.58 1259.4



NO RECORDED TIES FOUND. EXAMINED AREA AND DISTANCES/LINE TO OTHER CORNERS. PROBED AROUND POST BUT NOTHING FOUND. SET 5/8" REBAR WITH YPC 17979 SOUTH OF THE CORNER POST.

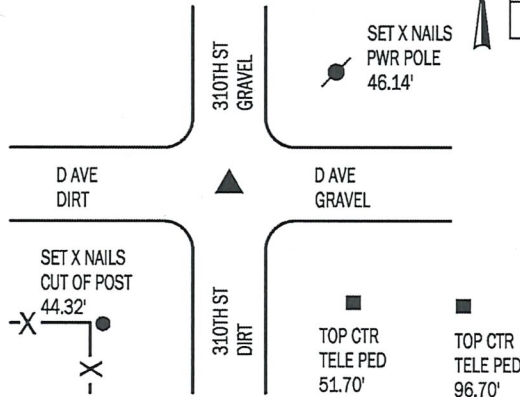
I HEREBY CERTIFY THAT THIS LAND SURVEYING DOCUMENT WAS PREPARED BY ME OR UNDER MY DIRECT PERSONAL SUPERVISION AND THAT I AM A DULY LICENSED PROFESSIONAL LAND SURVEYOR UNDER THE LAWS OF THE STATE OF IOWA.

*Mike Schulte*  
 MIKE SCHULTE 2019/05/08  
 DATE  
 LICENSE NUMBER: 17979  
 LICENSE RENEWAL DATE IS DECEMBER 31, 2019  
 PAGES COVERED BY THIS SEAL: 1 OF 1



**NE CORNER**

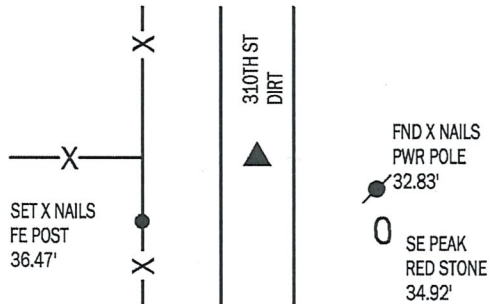
FND 5/8" REBAR 4" DEEP  
 NORTHING EASTING ELEV  
 7299092.93 16626863.78 1350.4



COUNTY ENGINEER'S TIES INDICATE A CONCRETE MONUMENT. USED METAL LOCATER AND TIE TO POWER POLE AND FOUND A 5/8" REBAR 4" DEEP. PROBED 2' DEEP NEXT TO REBAR AND HIT A SOLID OBJECT. ACCEPTED 5/8" REBAR AS CORNER AND RETIED.

**E1/4 CORNER**

FND BROKEN C.M. 2" DEEP  
 NORTHING EASTING ELEV  
 7296452.68 16626907.48 1282.0



USED TIES FROM CRAWFORD #8893 TO FIND CONCRETE MONUMENT 2" DEEP. SOME OF THE PREVIOUS TIES ARE NOW MISSING, SO ADDITIONAL TIES WERE SET.

\*All distances are measured horizontally unless noted.

**LIST CORNERS TO BE INDEXED**

CORNER	SECTION	TWP	RANGE
N1/4 COR	21	85	38
S1/4 COR	16	85	38
NE COR	21	85	38
NW COR	22	85	38
SW COR	15	85	38
SE COR	16	85	38
E1/4 COR	21	85	38
W1/4 COR	22	85	38
CTR SEC	21	85	38

**BASIS OF BEARING**

laRCS ZONE 6 - US SURVEY FEET  
 laRTN DERIVED - NAD83(2011)(EPOCH 2010.00)