

FILED DENISON, IOWA  
CRAWFORD COUNTY

INDEXED  
RECORDED  
DATE

2001 APR 16 PM 4: 24

INST. NO. 2001-0922  
DENISE MEEVES, RECORDER  
Denise Meeves  
FEE \$ 6.00

This document prepared by: Semke & Associates - 712-792-2276  
Michael G. Semke, L.S.#10318 - 712 N. Crawford - Carroll, Iowa

UNITED STATES PUBLIC LAND SURVEY CORNER CERTIFICATE  
OF

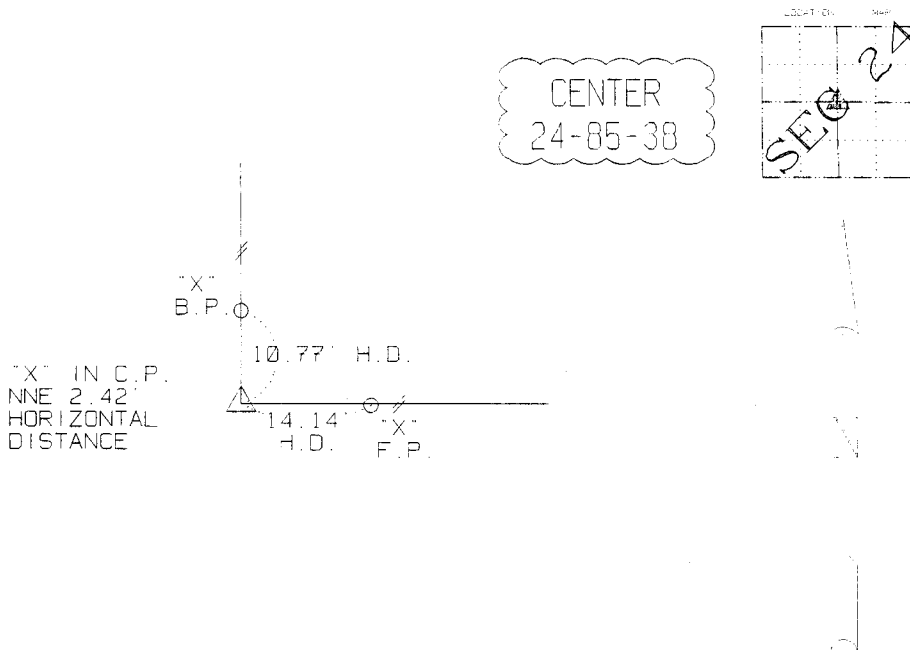
Land Survey Monuments situated in Section 24 Township 85 Range  
38 of the Fifth Principal Meridian, Crawford County, Iowa.  
Previously recorded in n/a in County Recorder's Office.  
(book, page, document number, etc.)

(Show reason for preparing this certificate, the evidence and detailed procedures used in establishing the corner positions and monumentation found or placed.)

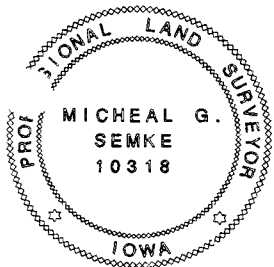
Found lone gray stone with point up 24" deep at fence  
intersection. No previous field or record ties  
available.

PLAN - VIEW

(Show a minimum of three reference ties to durable physical objects, relevant monuments and physical conditions that will enable recovery of the corner.)



Note: All distances are in feet unless noted.



I HEREBY CERTIFY THAT THIS CORNER CERTIFICATE  
WAS PREPARED BY ME OR UNDER MY DIRECT PERSONAL  
SUPERVISION AND THAT I AM A PROFESSIONAL LAND  
SURVEYOR UNDER THE LAWS OF THE STATE OF IOWA.  
MY REGISTRATION IS SUBJECT TO RENEWAL 12-31-01.

4/12/01  
DATE

*Michael G. Semke*  
MICHAEL G. SEMKE, ILS NO 10318

List Corners to be Indexed

Corners	Section	Twp	Range
CTR SEC.	24	85	38