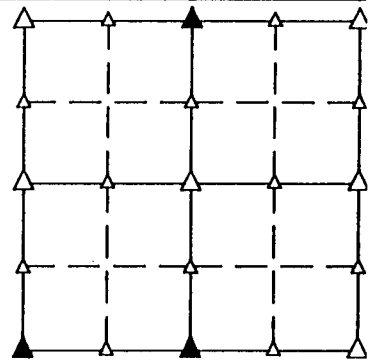


UNITED STATES PUBLIC LAND SURVEY CORNER CERTIFICATE OF

LAND SURVEY MONUMENT SITUATED IN SECTION 31, T 85 N, R 38 W OF
THE 5TH P.M., CRAWFORD COUNTY, IOWA.
PREVIOUSLY RECORDED IN BOOK _____, PAGE _____, OTHER _____

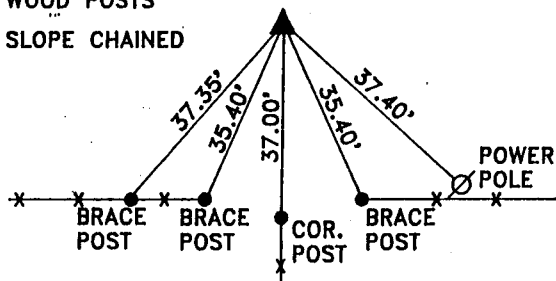
MONUMENT DESCRIPTION AND REMARKS

N1/4 CORNER - FOUND IRON PIN 1.5' DEEP, RAISED W/CAPPED PIN
#8893 5" DEEP
S1/4 CORNER - FOUND CONC. MONUMENT 3" DEEP
SW CORNER - FOUND PK NAIL IN ASPHALT

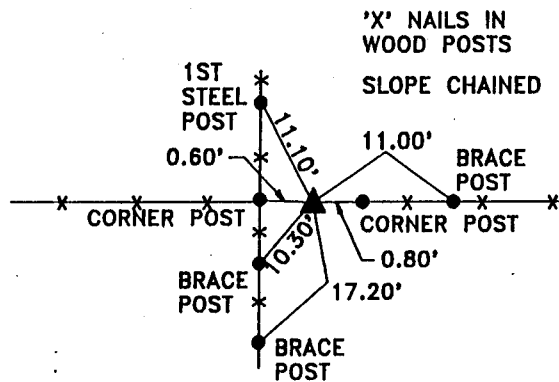


PLAN VIEW SHOWING RELATIVE LOCATION OF MONUMENT AND REFERENCE POINTS.

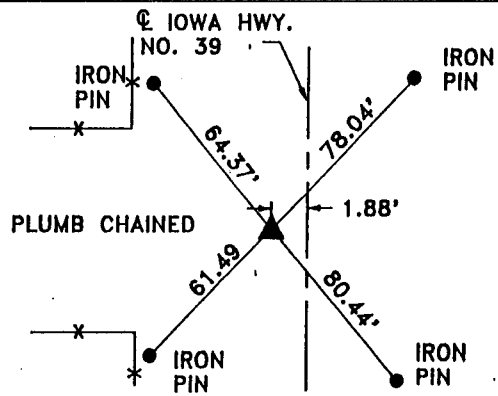
'X' NAILS IN
WOOD POSTS
SLOPE CHAINED



N1/4 CORNER SECTION 31-85-38



S1/4 CORNER SECTION 31-85-38



SW CORNER SECTION 31-85-38

I HEREBY CERTIFY THAT THE SURVEY WORK WAS COMPLETED AND THIS LAND SURVEYING DOCUMENT WAS PREPARED BY ME OR UNDER MY DIRECT PERSONAL SUPERVISION AND THAT I AM A DULY REGISTERED LAND SURVEYOR UNDER THE LAWS OF THE STATE OF IOWA.

Terence E. Crawford
TERENCE E. CRAWFORD



DATE 12-6-95
IA REG. NO. 8893
EXP. DATE DECEMBER 31, 1995

RECORDING OFFICER