



INDEXED PLS
 FOLLOW UP PLS
 PROOFED DM
 SCANNED aj

REC011670



Crawford County Recorder Denise Meeves
 FEE BOOK 2006-2438 8/18/2006 @ 11:16AM
 PLC PLAT CORNER CERBook: Page: #: 1
 Total Fees: \$7.00

PREPARED BY & RETURN TO MICHAEL G. GEIER, SNYDER & ASSOCIATES, INC. 2727 SW SNYDER ROAD, ANKENY, IOWA 50023 (888) 964-2020

UNITED STATES PUBLIC LAND SURVEY CORNER CERTIFICATE OF

Land Survey Monuments situated in Section 35, Township 85, Range 38, of the Fifth Principal Meridian, CRAWFORD County, Iowa.
 Previously recorded in N/A in County Recorder's Office.
 (book, page, document number, ect.)

(Show reason for preparing this certificate, the evidence and detailed procedures used in establishing the corner positions and monumentation found or placed.)

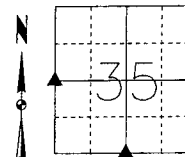
Monument Description and Remarks:

WEST 1/4 CORNER - FOUND 1" X 1/4" FLAT IRON 30" DEEP IN CENTERLINE 320th STREET AND RETIED SECTION CORNER.

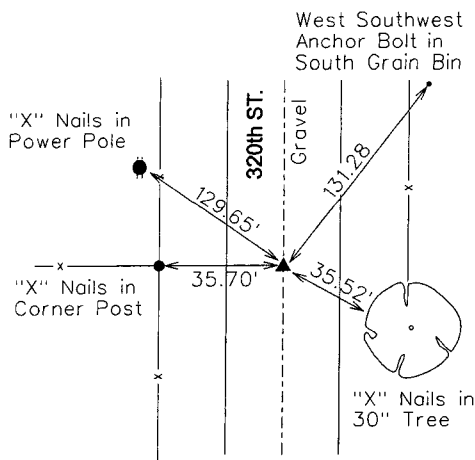
SOUTH 1/4 CORNER - FOUND 1/2" REBAR IN CENTERLINE "G" AVENUE USING EXISTING TIES AND RETIED SECTION CORNER.

Plan-View

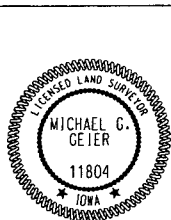
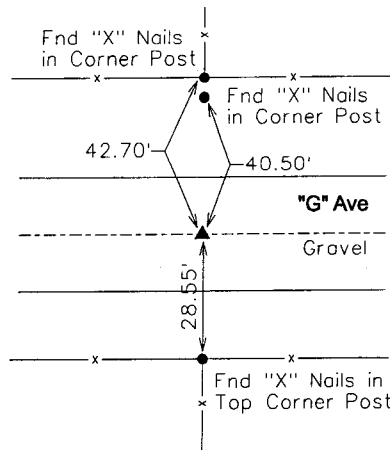
(Show a minimum of three reference ties to durable physical objects, relevant monuments and physical conditions that will enable recovery of the corner.)



W 1/4 CORNER
 FOUND 1"x1/4" FLAT IRON



S 1/4 CORNER
 FOUND 1/2" REBAR



I hereby certify that this land surveying document was prepared and the related surveying work was performed by me or under my direct supervision and that I am a duly licensed Land Surveyor under the laws of the State of Iowa.

Michael G. Geier 8-10-06
 Michael G. Geier, PLS Date

License Number 11804

My License Renewal Date is December 31, 2007

Pages or sheets covered by this seal:
 SHEET 1 OF 1

List Corners to be Indexed

Corners	Section	Twp	Range
W 1/4 COR	35	85	38
E 1/4 COR	34	85	38
S 1/4 COR	35	85	38
N 1/4 COR	2	84	38

TECH: JDP

PN: 85-38-35 (105.1255)

DATE: 04/03/06