

INDEXED
 FOLLOW UP 7/7
 RECORDED
 SCANNED



Crawford County Recorder Denise Meeves
 Fee Book 2007-0078 REC013100
 01/09/2007 11:10AM # Pages 1
 PLC PLAT CORNER CER
 Total Fees: \$7.00

PREPARED BY & RETURN TO MICHAEL G. GEIER, SNYDER & ASSOCIATES, INC. 2727 SW SNYDER ROAD, ANKENY, IOWA 50023 (888) 964-2020

UNITED STATES PUBLIC LAND SURVEY CORNER CERTIFICATE OF

Land Survey Monuments situated in Section 36, Township 85, Range 38, of the Fifth Principal Meridian, CRAWFORD County, Iowa. Previously recorded in 2006-2436 in County Recorder's Office.
 (book, page, document number, ect.)

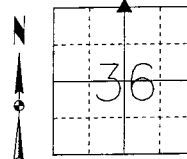
(Show reason for preparing this certificate, the evidence and detailed procedures used in establishing the corner positions and monumentation found or placed.)

Monument Description and Remarks:

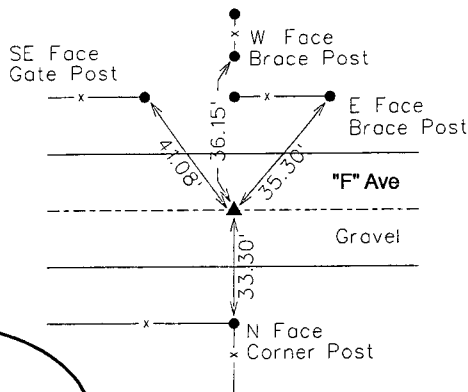
N 1/4 CORNER - FOUND BENT REBAR 6' DEEP ABOVE CONCRETE MONUMENT @ "F" AVENUE. WEST HALF OF CM CHIPPED OFF. RETIED SECTION CORNER.

Plan-View

(Show a minimum of three reference ties to durable physical objects, relevant monuments and physical conditions that will enable recovery of the corner.)



N 1/4 CORNER
 FOUND CONCRETE MONUMENT



NOTE:
 THIS DOCUMENT IS TO REPLACE THE DOCUMENT RECORDED IN FEE BOOK 2006-2436 WHERE THE N 1/4 CORNER WAS INCORRECTLY LABELED IN T85N, R37W. IT IS ACTUALLY LOCATED IN T85N, R38W.

LICENSED LAND SURVEYOR

MICHAEL G. GEIER

11804

IOWA

I hereby certify that this land surveying document was prepared and the related surveying work was performed by me or under my direct supervision and that I am a duly licensed Land Surveyor under the laws of the State of Iowa.

Michael G. Geier 1-8-07
 Michael G. Geier, PLS Date

License Number 11804
 My License Renewal Date is December 31, 2007

Pages or sheets covered by this seal:
 SHEET 1 OF 1

List Corners to be Indexed

Corners	Section	Twp	Range
N 1/4 COR	36	85	38
S 1/4 COR	25	85	38

TECH: JDP

PN: 85-37-36 (105.1255)

DATE: 12/29/06