

3192 N.E. CORNER OF SEC 6, 85-38

65 Found 3 rock 3x3x4 and 8 small  
 rock around 3 rock at a depth of 5'.  
 Replaced and set C.M.

Lies from X SPIKES IN COR POSTS  
 26.8 S. FROM COR POST  
 35.0 N.E. ...  
 40.6 N.W. ...

SAC. CO.

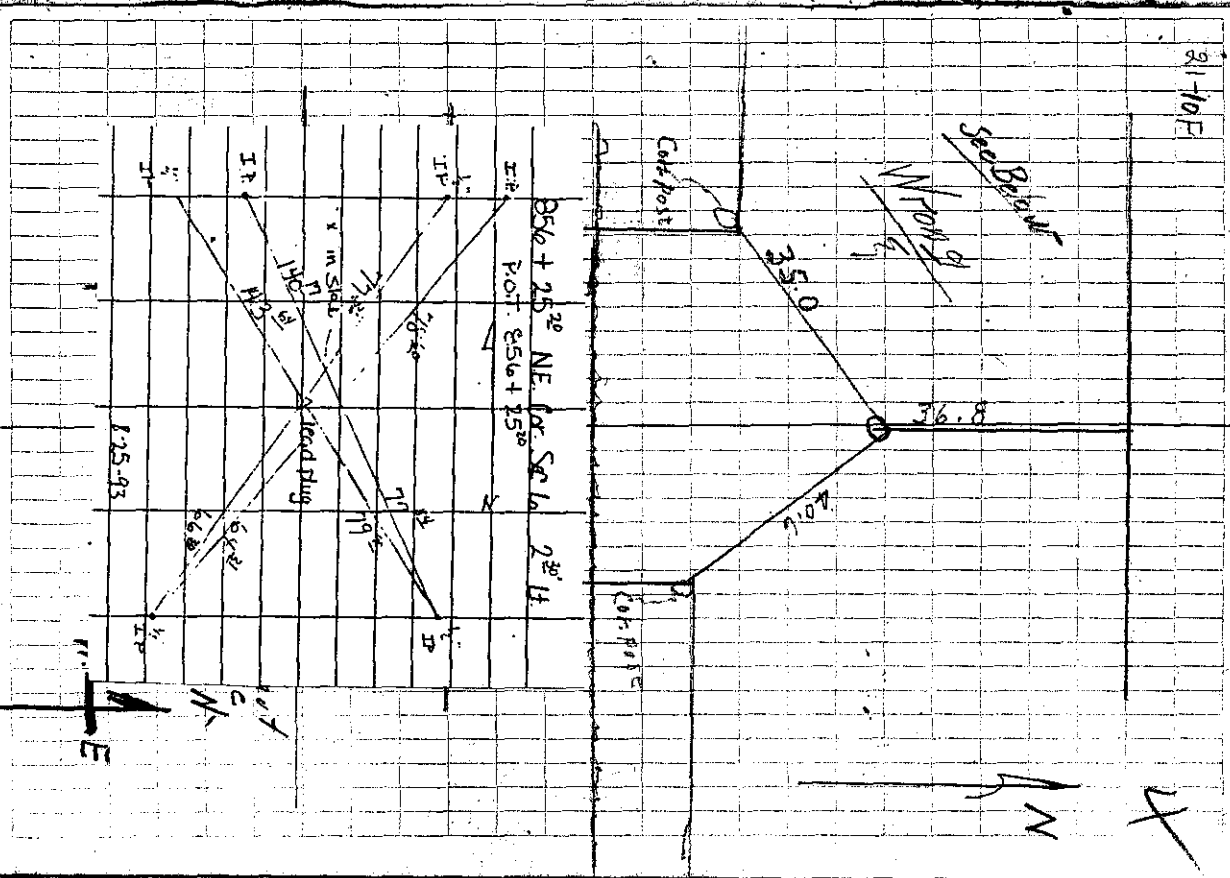
31 32 NE COR 6-85-38

6 5 Lime Stone 30' & Iron Rod &  
 Crawdad

59.2 S.E. FROM COR POST E.E. WEST  
 40.5 SE. FROM T.C. POST  
 54.9 NW FROM 12' WAGNAIL TREE  
 45.0 NE FROM COR POST

81-10F

Found 12-14-39 12 V



0 30'