

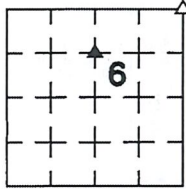
UNITED STATES PUBLIC LAND SURVEY CORNER CERTIFICATE

Prepared by & Return to: Joseph A. Snethen, P.L.S.
 PH: 515-832-1876 Clapsaddle-Garber Associates, Inc.
 FAX: 515-832-1932 511 Bank St., Webster City, IA. 50595

INDEXED KM
 FOLLOW UP _____
 PROOFED _____
 SCANNED _____

Corners to be Indexed

Corners	Section	Township	Range
NE Corner	6	T85N	R38W
SW Corner	6	T85N	R38W
FrNW¼ FrNE¼			



Instrument #: 2019-0556
 04/02/2019 08:06:19 AM Total Pages: 2
 PLC PLAT COR CERT
 Recording Fee: \$12.00 Transfer Tax: \$0
 Denise Meeves, Recorder, Crawford County Iowa

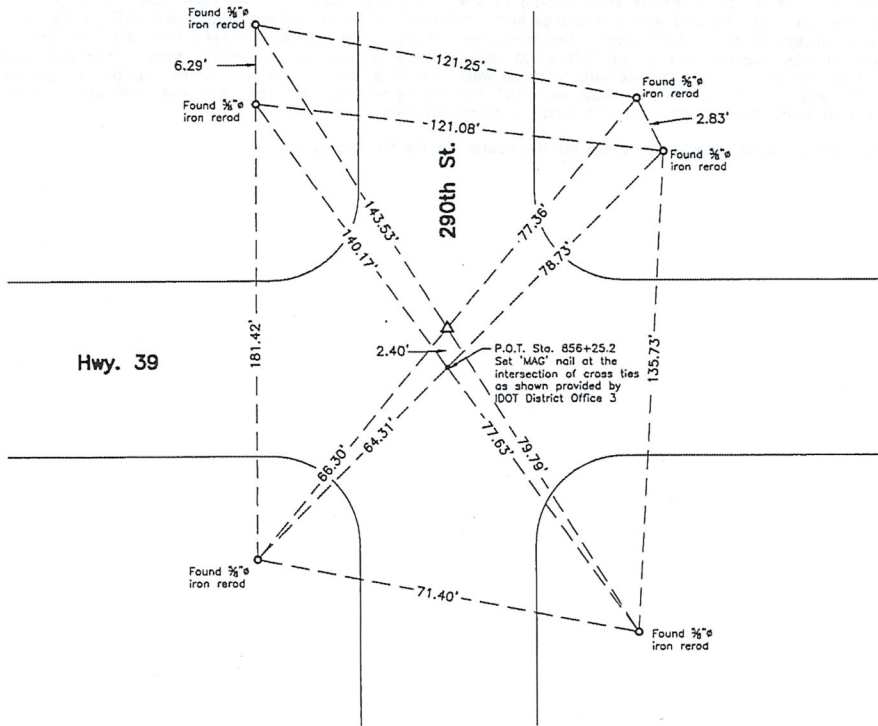


Land Survey Monuments situated in Section 6, Township 85 North, Range 38 West of the Fifth Principal Meridian, Crawford County, Iowa, Previously recorded in (See below) in County Recorder's Office.

NE Corner - Inst. No. 2001-3691 SW Corner FrNW¼ FrNE¼ - Not Applicable

These corners were used for a survey in this section for Kyle and Stephanie Ullrich. Basis of bearing for this corner certificate can be found on the associated plot of survey filed in the County Recorder's Office for this section.

NE Corner



Corner Recovery =
 Searched area with metal detector and found nothing. All the ties from IDOT District 3 field office Field Book Ties were found as shown. Per conversation with said office, it was decided that the ties were cross tied and that the NW quadrant ties as shown in the field book were drawn incorrectly in said book. When the ties were cross tied (as shown above), the record stationing, the record distance between monuments set, and the centerline as extended through monuments at P.O.T. Station 829+95.5 to P.I. Station 809+05.76 makes a straight tangent. Said District 3 office agrees with the locations and analysis. Therefore, set 'Survey Mark' nail, flush at intersection of record ties using the aforementioned switch in the NW quadrant ties and used the 'Survey Mark' nail as the correct corner. Nail is 2.0'± North of apparent centerline of traveled surface of ACC road East-West, inline with apparent centerline of traveled surface of ACC road North, and inline with apparent centerline of traveled surface of gravel road South. All ties are plumb distance unless indicated otherwise.

This certificate is being prepared because there is a change to monumentation of record and to clarify ties of record.



I hereby certify that this land surveying document was prepared and the related survey work was performed by me or under my direct personal supervision and that I am a duly licensed Professional Land Surveyor under the laws of the State of Iowa.

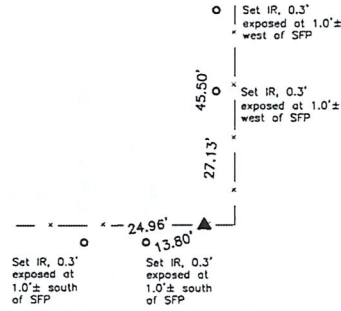
Joseph A. Snethen
JOSEPH A. SNETHEN, PLS
 Date: 3-25-2019 License number: 23133
 My license renewal date is December 31, 2020
 Pages or sheets covered by this seal: 1 & 2

Legend

IR = 1/2" x 2.0' Iron Rerod
 SFP = Steel 'T' Post



SW Corner FrNW¼ FrNE¼



Corner Recovery =

Local fenceline evidence agrees reasonably well to a proration against distances from Page 71 of County Engineer's McHenry Field Book 22 from reading at the S¼ Corner to the N¼ Corner. Searched area with metal detector, excavated 3.5'ø x 2.0'± deep hole at fenceline intersection and found full orange brick, upright at 0.8'± deep with small stone on south side over 6" x 6" x 8" gray hard stone, 1.5'± deep (directly beneath) with half orange brick upright on north side of hard stone over 3½"ø x 2½" tall cast iron circle with bumps on outside of circle, 2.2'± deep. The monuments found match exactly to Page 67 of said Field Book. Therefore, tied out top center of brick and removed all, set ¾"ø x 4.0' aluminum capped iron rodd (#23133), flush at tied out location and used it as the correct corner. Rerod is in-line with fenceline West and 3.0'± West of fenceline North. All ties are plumb distance unless indicated otherwise. Placed full brick on east side, half brick on north side, cast iron circle and small stone on west side and 6" x 6" x 8" stone on south side of rerod at 1.3'± deep as memorials only.

This certificate is being prepared because there are no certificates on file for this corner.

