

INDEXED SM  
 FOLLOW UP \_\_\_\_\_  
 PROCESSED \_\_\_\_\_  
 SCANNED \_\_\_\_\_

Instrument #: 2015-2320  
 11/06/2015 12:55:37 PM Total Pages: 1  
 PLC PLAT CORNER CER  
 Recording Fee: \$0.00 Transfer Tax: \$0  
 Denise Reeves, Recorder, Crawford County Iowa



PREPARED BY: PAUL ASSMAN-CRAWFORD COUNTY ENGINEER'S OFFICE-COURTHOUSE-DENISON, IA.-712-263-2449

**UNITED STATES PUBLIC LAND SURVEY CORNER CERTIFICATE  
 OF**

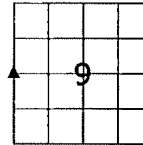
LAND SURVEY MONUMENT SITUATED IN STOCKHOLM TOWNSHIP, THE WEST 1/4 CORNER OF SECTION 9, T-85N,  
 R-38W OF THE FIFTH P.M. CRAWFORD COUNTY, IOWA.

PREVIOUSLY RECORDED AS NO. 2005-2772

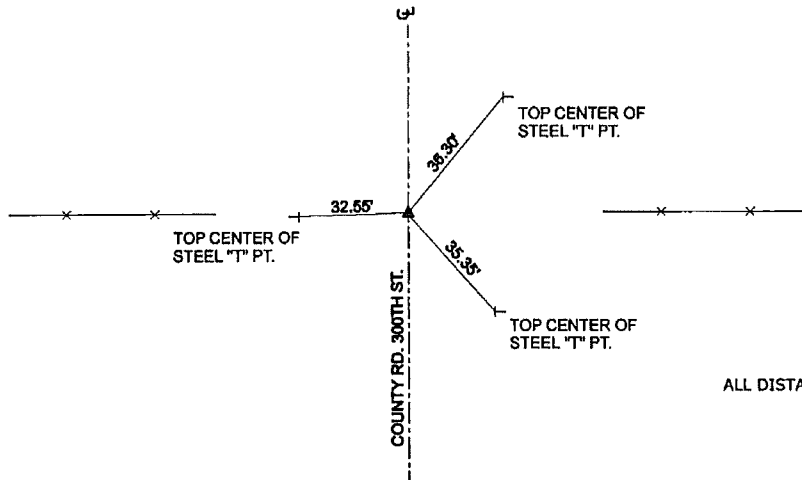
**MONUMENT DESCRIPTION AND REMARKS**

WEST 1/4 CORNER SEC. 9-85-38

FOUND CONCRETE MONUMENT AT SURFACE.  
 COUNTY GRADED ROAD ADDING FILL OVER  
 CONCRETE MONUMENT AFTER GRADING WAS  
 COMPLETED. SET 5/8" REBAR WITH RED CAP  
 #11982 8" DEEP ABOVE CONCRETE MONUMENT AND  
 RETIED CORNER.



WEST 1/4 CORNER SEC. 9-85-38



ALL DISTANCES ARE SLOPE CHAINED

**CERTIFICATION:**

I HEREBY CERTIFY THAT THIS LAND SURVEYING DOCUMENT WAS PREPARED AND THE RELATED SURVEY WORK WAS PERFORMED BY ME OR UNDER MY DIRECT PERSONAL SUPERVISION AND THAT I AM A DULY LICENSED LAND SURVEYOR UNDER THE LAWS OF THE STATE OF IOWA.

Paul J. Assman 11/3/15  
 Signature Date of Survey

PAUL J. ASSMAN 11982 12-31-16  
 Typed Name L.S. No. License Renewal Date

